



Radiant Heating

Design Range

Ceiling Range

Floor Range

The best heating

FOR YOUR WELL-BEING





Heats

What it should, **Where** it should, **When** it should.
What it should, **Where** it should, **When** it should.
What it should, **Where** it should, **When** it should.
What it should, **Where** it should, **When** it should.

What is radiant heating?





Radiant heating is the transfer of heat energy using energy waves. Heat energy in the form of radiation will always travel from a hot surface to a cooler surface.

Consider the Sun, the Earth's only source of heat, which is 150 million Km away.

The Sun warms the Earth from a fantastic distance purely using radiant energy.

Even before the air is warm, heat from the sun can be felt, such on a clear winter morning, or on top of a snowy mountain.

Warmth from the sun is instantaneous - you experience this when the sun emerges from behind a cloud.

So perhaps it's no surprise that radiant heating is the form of warmth most comfortable to humans, whether from the sun, a burning fireside or today's energy efficient, discreet heating systems.

- Radiant heating installed in the floor, ceiling or wall has a high energy efficiency.
- Incredibly economical to use.
- Elegant and decorative heating solutions, which are an integral part of your furniture.
- A wide range of designs to suit your personal style with your choice of radiator.
- No air movement compared to convection systems, no circulation of dust.
- Hygienic, clean and discreet.
- Simple to install, with quick connection systems (Plug and Play).
- No maintenance once installed.
- Long life of the system with no moving parts.
- Precise, accurate management of comfort and power consumption.



**That is why, with superior comfort and a lower air temperature you save:
Because 1°C lower air temperature is equal to 7% energy saving.
The maths is simple - you can achieve at least a 30% direct saving.**

Three range comfort

A world of possibilities

For floors, ceilings or works of art for your walls, discover our range of products suitable for your comfort and well-being. Elegant thin glass radiant panels and decorative radiators reproduce images or artwork you like. With a radiant ceiling that mimics the sun's heat, or the warmth and luxury of a heated floor, you will find in our catalogue a solution tailored to your comfort needs, and a design in harmony with your interior space, while delivering significant energy saving.





Design Range

MODERN AND CONTEMPORARY

An elegant and discreet design

6-25

Ceiling Range

HEATING INTEGRATED IN OR MOUNTED TO THE CEILING

Recreate the sun in your interior

26-37

Floor Range

HEATING WITHIN THE FLOOR

Create the feeling of a warm floor

38-47

Design range

Why choose between looks and efficiency ?

The Design range offers a wide choice of products to mount on the wall or ceiling. These products are visible so we paid particular attention to the design and choice of materials: Glass, stainless steel, aluminium, ceramics...

All ILO design heaters include an ultra thin heating film to combine aesthetics and performance. Follow your senses, choose the style, we take care of the performance.



DIAMANT

RADIATOR 100% GLASS AND STAINLESS STEEL TRIM (AND OPTIONAL TOWEL DRYERS)

Elegant wall-mounted radiators in glass and stainless steel in a wide choice of contemporary colours

CRYSTAL

GLASS RADIATOR WITH ALUMINIUM TRIM (AND OPTIONAL TOWEL DRYERS)

Light wall mounted glass radiator with an aluminium frame in a large choice of contemporary colours

CERAMIC

CERAMIC RADIATOR WITH ALUMINIUM TRIM (AND OPTIONAL TOWEL DRYERS)

Light wall mounted ceramic radiator with an aluminium frame, in white or graphite stone

GRANIT

LATENT HEAT RADIATOR

Radiator of glass and aluminium construction combined with nano technology phase change material

AGATE

DECORATIVE RADIANT PANELS

Your heating becomes an art work

SAND

HEATED MATS

Comfortable, low temperature and transportable

OPAL

MIRROR DEMISTER FILM

An indispensable accessory for your comfort in the bathroom



DIAMANT

GLASS PANEL RADIATORS

With stylish, ultra slim design and high efficiency, DIAMANT radiators provide all the benefits of radiant heating in a pleasing and convenient wall mounted solution.

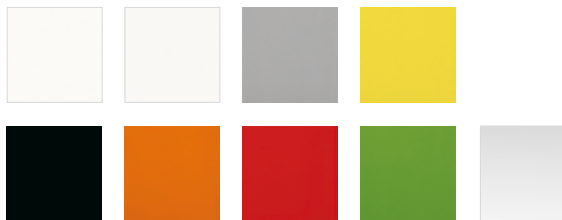
Designed with both sides of wonderful coloured tempered glass and trimmed by a thin brushed stainless frame as a statement of design, they are equally suitable for the home or office.

With the chromed and polished drying rails that you can fix anywhere, DIAMANT radiators become towel dryers for a stylish bathroom solution (choose as many as you need).

At the heart of each DIAMANT radiator is the special ILO thin film heating element. The whole surface is heated to an even temperature and emits a natural sort of infrared heat very close to the human body's heat.

The slim design and large heating surface minimizes convection and maximizes efficient radiant heating.





Elegant glass wall-mounted radiator

- Maximum energy efficiency
- Immediate effect
- Ideal for living rooms, bedrooms, bathrooms and offices
- Choice of 8 colours + decorative mirror
- Comfortable radiant heating
- Optional towel hanging rails
- Outputs from 400 to 1100 Watts
- Three heights: 600, 1200 and 1800mm
- 600mm wide
- Optional integrated wireless thermostatic programmer

DIAMANT

GLASS PANEL RADIATORS

The even surface temperature gives better comfort and a comfortable temperature all around the room. Several heaters may be positioned on opposite sides of a room to ensure balanced comfort conditions, or heaters may be used to “spot heat” local areas of occupation.

DIAMANT radiant heaters respond instantly to demand - there is no need to preheat a room. Simply switch on and you feel the warmth immediately.

DIAMANT radiant heaters emit up to 75% of their heat output in the form of radiated heat. Thus, convection is reduced and most of the heat is then directed to the occupants.





For specifications, see page 48 to 49

Design range

CRYSTAL

GLASS PANEL RADIATORS

CRYSTAL : a tempered glass radiator trimmed with a thin aluminium frame.

Finished on one side with coloured tempered glass and aluminium trim, CRYSTAL radiators are equally suitable for the home or office. With the chromed and polished flat drying rails, CRYSTAL radiators become towel dryers for a stylish bathroom solution.

At the heart of each CRYSTAL radiator is the special ILO thin film heating element. The whole surface is heated to an even temperature and emits a natural sort of infrared heat very close to the human body's heat.

The slim design and large heating surface minimizes convection and maximizes efficient radiant heating.





Slim glass wall-mounted radiator

- Maximum energy efficiency
- Immediate effect
- Ideal for living rooms, bedrooms, bathrooms and offices
- Choice of 8 colours + decorative mirror
- Comfortable radiant heating
- Optional towel hanging rails
- Outputs from 250 to 1100 Watts
- Three heights:
600, 1200 and 1800mm
- 400 and 600mm wide
- Optional integrated wireless thermostatic programmer

CERAMIC

CERAMIC PANEL RADIATORS

Committed to offering you a wide choice to suit your interior design, ILO offers the CERAMIC decorative stone radiator.

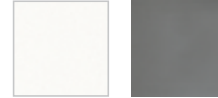
Discover the beauty of natural stone, white or dark, its hot surface gives you the feeling of a hot lava stone ...

With a reconstituted stone surface and design aluminum trim, they are equally suitable for the home or office. With the chromed and polished flat drying rails, CERAMIC radiators become towel dryers for a stylish bathroom solution.

At the heart of each ILO CERAMIC radiator is the special ILO thin film heating element. The whole surface is heated to an even temperature and emits a natural sort of infrared heat very close to the human body's heat.

The slim design and large heating surface minimizes convection and maximizes efficient radiant heating.





Slim Ceramic wall-mounted radiator

- Maximum energy efficiency
- Immediate effect
- Ideal for living rooms, bedrooms, bathrooms and offices
- Choice of 2 colours
- Comfortable radiant heating
- Optional towel hanging rails
- Outputs from 250 to 1100 Watts
- Three heights:
600, 1200 and 1800mm
- 400 and 600mm wide
- Optional integrated wireless thermostatic programmer

GRANIT

LATENT CAPACITY RADIATOR

These stylish and sleek heaters incorporate a special latent heating material which has the ability to store heat for a period of time after the power has switched off. Unlike heaters that warm up, and then cool down in a continuous cycle, these radiators maintain a more or less constant temperature. For those who seek the impression of a hot water radiator with constant heat and a degree of heat storage, this product is for you.

The result is much more even room temperature, improved comfort for the occupants and increased energy saving.

Designed with both sides of wonderful thick coloured tempered glass and an aluminium internal frame as a statement of design, they are equally suitable for the home or office.

GRANIT radiators provide all the benefits of radiant heating in a pleasing and convenient design.





Stylish wall-mounted radiators

- Comfortable Radiant Heating
- Maximum Energy Saving with latent heat store
- An even temperature with no fluctuation
- Ideal for living rooms, bedrooms, offices
- Choice of three colours finishes
- Four sizes
- Outputs from 400 to 1200 Watts
- Built in thermostatic control

AGATE

DECORATIVE HEATER

AGATE is a slim wall or ceiling mounted panel on the surface of which we can print from a wide variety of designs, including abstract and graphic designs, animals, nature, inspiration, pictures, towns, and monuments, painted artworks or plain colours. The heater becomes art and adds a personal touch to your home or office. More than 300 artworks are available to order.

Made in Aluminium, with very high printing quality, all materials and processes were selected to offer the best product in a very large selection of sizes.

You have the unique possibility to change your pictures without changing your heater!

AGATE heaters provide all the benefits of radiant heating in a pleasing and convenient wall mounted solution. As a statement of design, they are equally suitable for the home or office.

At the heart of each AGATE radiator is the special ILO thin film heating element. The whole surface is heated to an even temperature and emits a natural sort of infrared heat very close to the human body's heat.

AGATE radiant heaters emit up to 75% of their heat output in the form of radiated heat. Thus, convection is reduced and most of the heat is then directed to the occupants.





Wall mounted radiator

- Wall or ceiling mounted stylish radiators
- Comfortable Radiant Heating
- Maximum Energy Saving
- Ideal for living rooms, bedrooms, offices, receptions...
- Choice of more than 300 designs
- Change your picture without limit
- 5 sizes
- Outputs from 400 to 1200 Watts
- Thermostatic control available as accessory

ALL PICTURES AVAILABLE ON :
www.ilo-international.com

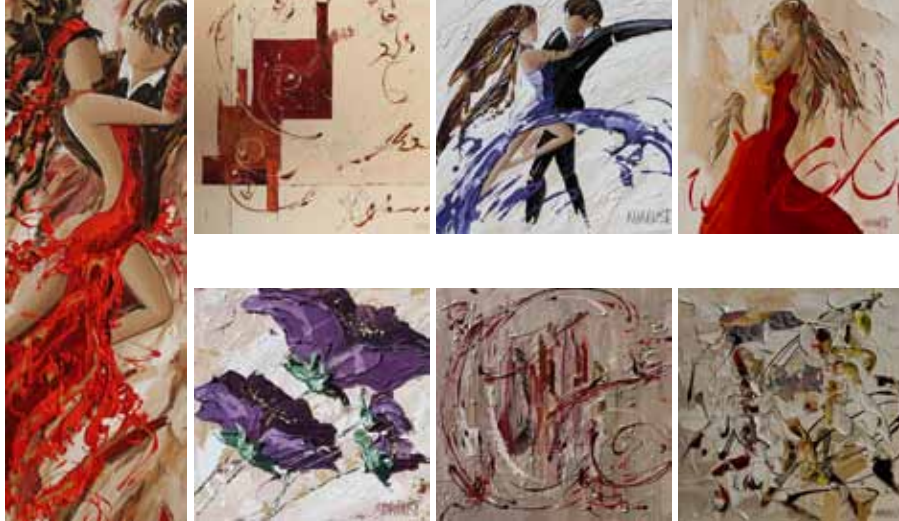


AGATE

DECORATIVE HEATER PICTURES

With a wide choice of dimensions and finish, AGATE will personalize your interior like no other product and you can change your choice of design in the future without replacing the heater. The even surface temperature gives better comfort and a comfortable temperature all around the room. Several heaters may be positioned on opposite sides of a room to ensure balanced comfort conditions, or heaters may be used to “spot heat” local areas of occupation. AGATE radiant heaters respond instantly to demand, there is no need to preheat a room. Simply switch on and you feel the warmth immediately.





Artist

We offer a unique decorative choice for your radiator: art work by Adaoust, a well-known artist in the south of France, working with themes of motion that depict dance, the human form, the abstract. Find the entire collection on the website of the artist : www.sylvieadaoust.com

Design range

SAND

HEATED MATS FOR LOCAL COMFORT

Heated mats are ideal for spot heating, under a desk or work station. These mats emit gentle radiant warmth, ideal on cold surfaces which would otherwise cause a chill to occupants.

Within each mat is the special ILO thin film heating element, fully protected and double insulated, covering almost the whole surface area. The whole surface is heated to an even temperature and emits a natural sort of infra-red heat very close to the human body's heat.

Mats are constructed from durable rubber backed material and supplied with cable and plug.





Localised moveable comfort

- Improved comfort at desks and workstations
- Comfortable, gentle heat source
- Durable rubber backed mat
- Ideal for living rooms, bedrooms, offices, receptions, workshops and industry
- Choice of 5 colours
- 2 sizes: 600x450 or 600x900
- Outputs 65 and 170 Watts
- Waterproof PVC version available

OPAL

MIRROR DEMISTER

OPAL Mirror Demisters are equally suited for domestic or commercial wet rooms to help prevent misting of mirrors or to demist mirrors when the room is steamy.

When connected, the thin heating film gently warms the mirror to prevent condensation which normally occurs when steamy atmosphere strikes a cold surface and can dry an already wet mirror. The film has a self-adhesive surface to apply to the back of the mirror for quick and easy installation. OPAL Mirror Demisters are available in a variety of sizes up to 1800 mm x 600 mm. A special 12V version is available for caravan and camper use.

Electrical connection is normally made through the light wiring or shaver socket. Thus, you save energy by using it only when you are there.





Easy way to avoid mist

- Fast demisting in wet and warm areas
- Quick installation with self adhesive film
- Connection to a suitable nearby power supply
- Choice of 17 sizes and more on demand
- Voltage 230 Volts or 12 Volts version (caravanning and boating)

For specifications, see page 58

Heating from the ceiling? What a strange idea!

With ceiling heating, we use the most basic principle of radiation, which involves directly heating objects, surfaces and occupants rather than air. Indeed a hot surface or object always emits radiant energy which is absorbed by a cooler surface, object or body. The heated ceiling creates a large hot surface at relatively low temperature close to that of the human body. Most people expect that heat rises but in fact only warm air rises, replaced by cold air at ground level. If the heat source is placed at the ceiling, the convection effect is stopped, more than 90% of the heat energy is emitted by radiation, giving you the best comfort even with an air temperature much lower than a convected warm-air system. It is not necessary to preheat the room for hours before you feel the sensation of radiant warmth. Switch on and feel the comfort! This is undoubtedly the most effective and most comfortable way to heat a room. To meet all types of installation, all skill levels and all budgets, ILO has developed a range of solutions, from simple film to place in the ceiling space, to fully integrated systems with Plug and Play electrical connection. Make your choice, you will trust your heating system.





ALTAIR

COMPLETE RADIANT CEILING KIT FOR RESIDENTIAL, COMMERCIAL OR OFFICES
(GYPSUM BOARD, PANNELING, SUSPENDED CEILING ...)

Heating kit with a thin insulation technology, plug-and-play system

VEGA

FILM IN ROLL FOR RESIDENTIAL RADIANT CEILING
(PLASTERBOARD, PANNELING, SUSPENDED CEILING ...)

Film for traditional installation from above or below ceiling, accessories sold separately

ORION

COMPLETE RADIANT CEILING KIT FOR RESIDENTIAL COMMERCIAL OR OFFICES
(GYPSUM BOARD, PANNELING, SUSPENDED CEILING ...)

Heating kit with a traditional insulation Rockwool, plug and play system

SIRIUS

MODULE FOR CEILING HEATING IN OFFICES

Standard grid ceiling tile for false ceiling
with integrated heating film and insulation

ANTARES

RADIANT CASSETTE TO SUSPEND
OR MOUNT IN THE CEILING

Radiant heating cassette for any application



Ceiling range

ALTAIR

HEATED CEILING KIT WITH THIN INSULATION LAYER

ALTAIR combines ILO Thin Film heating with a thin insulating reflector. ALTAIR consists of 12mm thick modules in different widths and two lengths. Individual panels or PLUG and PLAY kit available, including all accessories. ALTAIR module is specially equipped to be mounted directly under your ceiling joists.

The Plug and Play system supply connection line allows you a simple electrical connection without tools.

In one simple operation, you can fit the insulation, the heating system and the electrical connection.

You then simply mount plasterboard or panelling ...

After drying and normal decorating, your ceiling will be transformed into a wide and gentle heating surface, ensuring a pleasant and comfortable feeling from an invisible heating source.





All in one radiant heating ceiling

- Comfortable efficient radiant heating
- For use under plasterboard or wood ceilings
- A warm even heating source for the entire room
- Invisible - frees wall space
- Simple to install and once installed, there is no maintenance
- Suitable for flat or pitched ceilings
- Thin, insulated and protected heating film
- 12mm high density fiber glass insulation
- Lengths: 585mm and 1170mm
- Widths: 340 and 540mm
- Outputs: from 44 to 108 Watts
- Average output from 135 to 175 Watts/m²
- A range of control accessories
- Plug and Play System

For specifications, see page 59

VEGA

FILM IN ROLLS FOR RADIANT HEATED CEILING

VEGA is supplied in rolls, 400mm, 500mm or 600mm wide and up to 5600mm long. The heating film is unrolled and fixed directly to the joists or plasterboard hangers. As with all ceiling heating, it is important that there is a layer of insulation behind the heating film to prevent heat loss from the back surface. Plasterboard is then positioned over the film and secured. The ceiling may be plastered and decorated in the usual way. After drying out, the whole ceiling surface will be turned into a large and gentle radiant heating source, ensuring even, gentle and invisible heating for the room.





Film in Roll for ceilings with existing insulation

- Comfortable efficient radiant heating
- For use with plasterboard or panelled ceilings
- A warm even heating source for the entire room
- Invisible - frees wall space
- Simple to install and once installed, there is no maintenance
- Suitable for all rooms including kitchens and wet rooms
- Suitable for flat or pitched ceilings 400, 500, 600mm width from 135 to 175W/m²
- Optional Plug and Play System

ORION

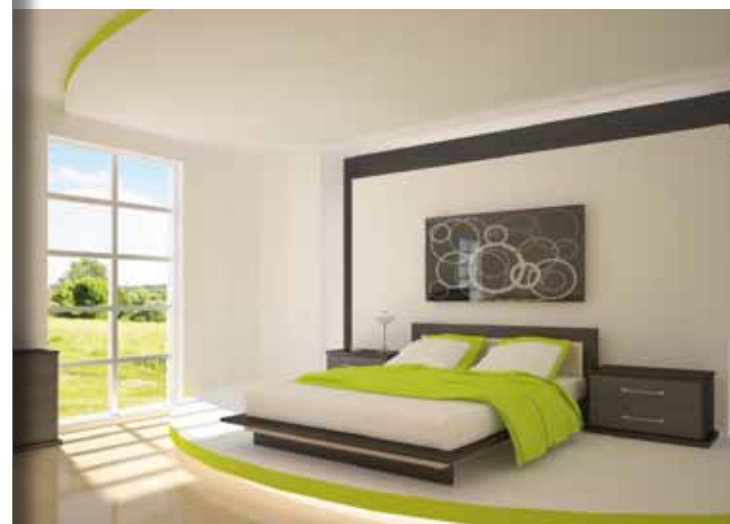
RADIANT HEATED CEILING KIT WITH ROCKWOOL INSULATION

With its integral Rockwool insulation, the ORION module simply rests on the joists of your ceiling plaster or plasterboard hangers. Especially designed to be installed and maintained without construction and without tools, the module is equipped with ILO PLUG and PLAY connection lines. Kits include heated and unheated (neutral) modules to maintain insulation integrity.

In one simple operation, you can fit the insulation, the heating system and the electrical connection

You then simply mount plasterboard or panelling ...

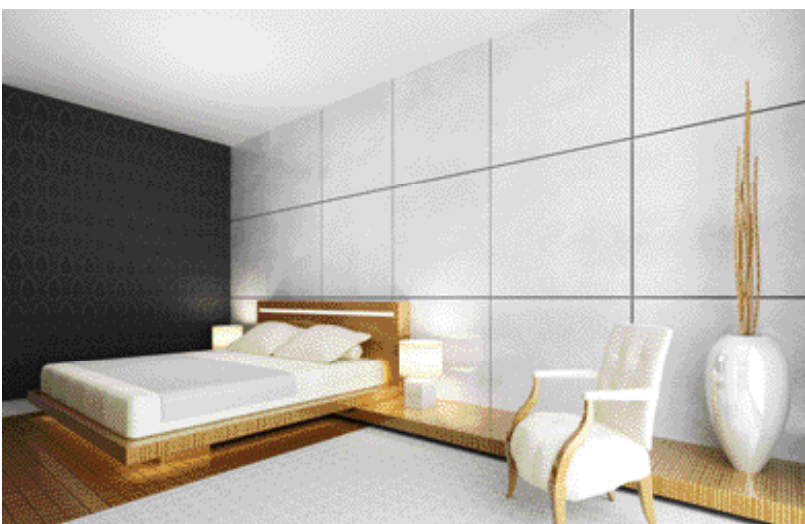
After drying and normal decorating, your ceiling will be transformed into a wide and gentle heating surface , ensuring a pleasant and comfortable feeling from an invisible heating source.





Prefabricated modules for heated ceiling

- Comfortable efficient radiant heating
- For use with plasterboard or panelled ceilings
- A warm even heating source for the entire room
- Invisible frees wall space
- Simple to install and once installed, there is no maintenance
- Suitable for flat or pitched ceilings
- Thin insulated and protected heating film
- 40 mm rockwool insulation
- Lengths: 585mm and 1170mm
- Width: 540mm
- Outputs: from 44 to 108 Watts
- Average output from 135 to 175 Watts/m²
- A range of control accessories
- Plug and Play system



SIRIUS

MODULAR RADIANT CEILING

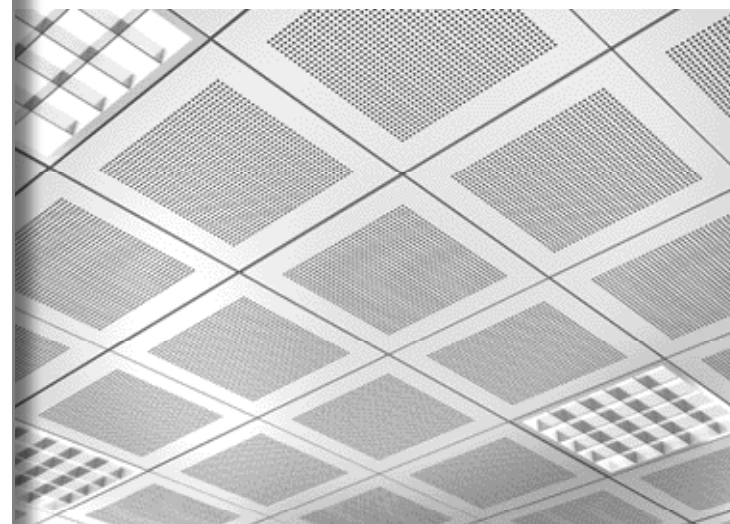
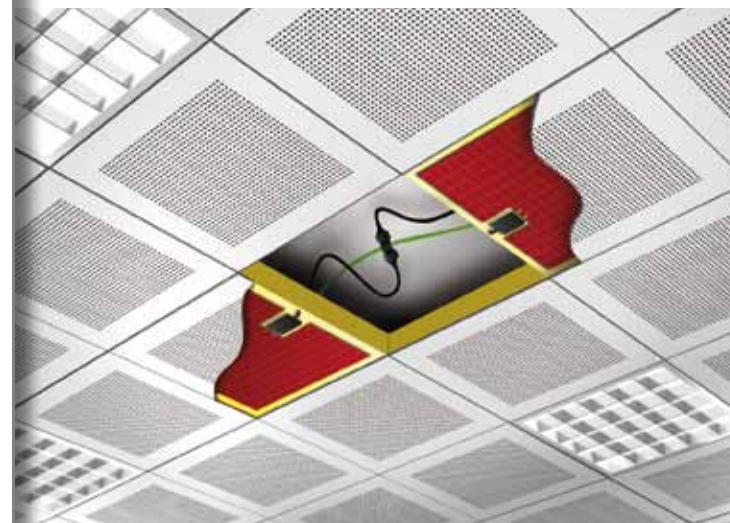
SIRIUS is designed for industry and the tertiary sector, the modular ceiling heating SIRIUS is undoubtedly the simplest and most efficient heating system.

Choose from a wide variety of standard tile manufacturers finishes, modular ceiling heating SIRIUS provides unobtrusive heating concealed in your office ceiling.

The modular ceiling heating SIRIUS tile with its integrated insulation replaces a conventional grid ceiling tile and lays in the ceiling grid as usual.

We can provide heated tiles in more than 90% of existing manufacturers decor lines. Like all ILO systems, each module is equipped with a Plug and Play system that connects each heating module to the power line. This also allows heated tiles to be moved at a future time, if for example the office layout needs to change.

By using an ILO Modular Radiant Ceiling, the decorative tile, heating system, insulation and electrical connection is provided: all your installation in a single operation.





All kinds of tiles with the following advantages

- Comfortable efficient radiant heating
- For use on modular ceiling grid frame
- A warm even heating source for the entire room
- Invisible: frees wall space
- Simple to install and once installed, there is no maintenance
- Heating tiles may be rearranged to suit future changes in room layout
- Thin insulated and protected heating film
- 40mm high density fiber glass insulation
- Lengths: 595mm and 1195mm
- Widths: 595mm
- Outputs: from 44 to 150 Watts
- Average output from 135 to 245 Watts/m²
- A range of control accessories
- Plug And Play System

For specifications, see page 65 to 66

ANTARES

HEATED CEILING MOUNTED CASSETTE

The ANTARES cassette consists of an aluminium frame in which is fitted an ILO thin heating film. Only ANTARES cassettes are equipped with a white aluminium heating surface, increasing the radiant heat emission by up to 20% compare to a steel structure. Thermal insulation prevents any heat loss from the upper surface. The ANTARES cassettes are fixed to the ceiling either by chains, screws or wires, suitable for the ceiling construction. ANTARES heating responds instantly to demand. There is no need to preheat a room. Simply switch on and you feel the warmth immediately. Comfort levels are high - It is the natural form of heat for humans.

The ANTARES cassettes are available in several dimensions, powers and protection ratings, and may be integrated in modern, traditional or suspended ceilings.





The discreet and easy way to install a heated ceiling

- **Elegant and discreet radiant heating system**
- **Suspended or mounted on to the ceiling**
- **Maximum energy saving**
- **Comfortable radiant heating system**
- **Immediate heating**
- **For sports halls, industry, schools, offices, shops etc**
- **Ceiling mounting height from 2.3 to 6.0 m**
- **Power from 160 to 1200 Watts**
- **Protection : IP20 or IP55**
- **Fixings included**
- **Range of thermostats available**
- **White finish, or any RAL colours on demand**

For specifications, see page 67

Radiant floor heating, a conventional idea for new build and renovation!

We all know the feeling of soft and gentle low temperature underfloor heating. This system also uses the principle of radiation due to its large surface heat emission and low convective effect. From a traditional heated floor set in concrete or directly installed under tiles, to dry installation, ILO provides a choice of systems for any floor type. Easy, think comfort!





TANAMI

KIT FOR LAMINATED FLOOR FOR RESIDENTIAL OR COMMERCIAL BUILDINGS

Prefabricated heating module, pre-insulated for installation. Plug and Play.

ACCONA

FILM IN ROLL FOR LAMINATE FLOORING, PVC FLOOR,
RESIDENTIAL OR COMMERCIAL BUILDINGS

Heating film to place over a standard polyethylene foam underlay (not included).

Dry installation without glue or tools.

HOGGAR

HEATING CABLE FOR INSTALLATION UNDER TILES

Very thin cable with preset spacing for easy installation.

TENERE

UNDER FLOOR HEATING CABLE FOR RESIDENTIAL
OR COMMERCIAL BUILDINGS

Special cable to be installed in concrete.



TANAMI

RADIANT FLOOR HEATING MODULE MODULAR KIT FOR LAMINATED FLOORS

TANAMI is a revolutionary system for electric underfloor heating that is incredibly easy to install and so convenient!

TANAMI modular heating mats integrate heating film and high performance insulation, with a plug and play connection system requiring minimal installation.

Each TANAMI module is supplied as a 1170mm x 540mm sheet pre-insulated with high performance, ultra thin insulation and is fully encapsulated for safety. Kits include heated and unheated (neutral) modules. Modules are simply laid on the floor base, covering the entire floor surface.

Unheated modules are used where no heating is required, to maintain the floor level and insulation integrity. Completing the kit are the necessary controls and fast connection lines.

The entire floor surface will be transformed into a gentle efficient radiant heat source, providing comfortable and invisible heating in the room. Dry installation without glue or tools.





**An ingenious way to install,
an incredible efficiency**

- Comfortable efficient radiant heating
- For use under laminated or PVC floor covering
- A warm even heating source for the entire room
- Invisible - frees wall space
- Simple to install and once installed, there is no maintenance
- Suitable for residential or industrial use
- Thin insulated and protected heating film
- 12mm high density fiber glass insulation
- Length: 1170mm
- Width: 540mm
- Output: 88 Watts
- Average output: 135 Watts/m²
- A range of control accessories
- Plug and play system



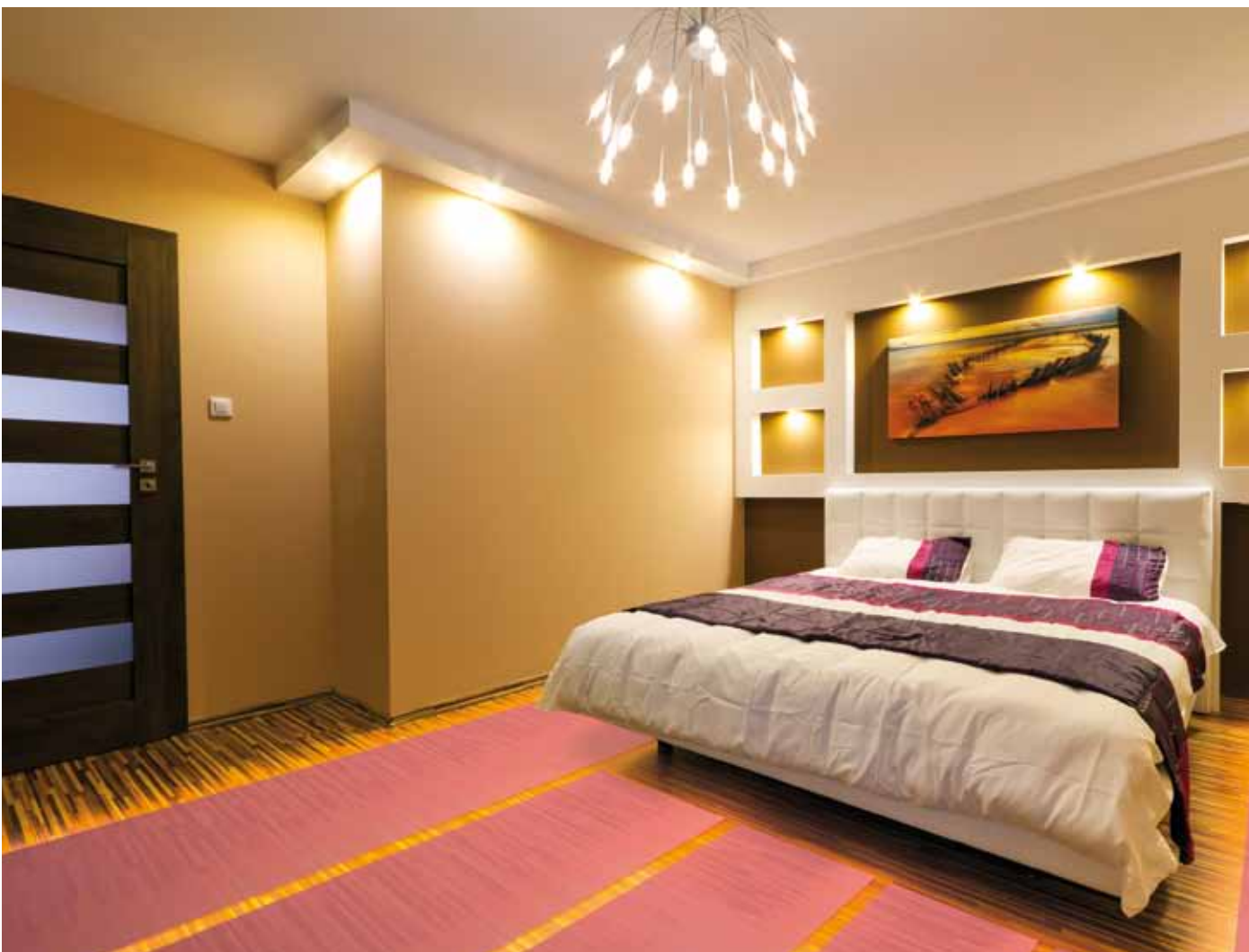
ACCONA

ROLL FILM FOR FLOATING FLOOR

ACCONA Heating is supplied in rolls, 500mm or 540mm wide and up to 5600mm long. The heating film is unrolled and laid on top of the subfloor directly under the floor covering, which may be wood, laminate or PVC. As with all heated floor, it is important that there is a layer of insulation below the heating film to prevent heat loss from the back surface.

Film is laid on a standard polyethylene foam and secured in place with tape and then, the floor covering may be laid. In this way, the whole floor surface, except areas to be covered by fixed furniture, will be turned into a large and gentle radiant heat source, ensuring even, gentle and invisible heating for the room.





The best comfort, low cost and high efficiency

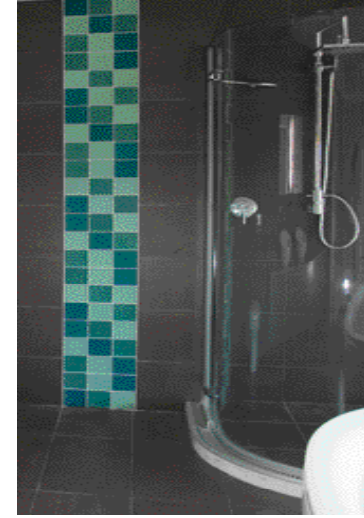
- Comfortable efficient radiant heating
- For use under wood, laminate or PVC and above a polyethylene foam (not supplied)
- A warm pleasant floor, comfortable to the touch
- Invisible - frees wall space
- Simple to install and once installed, there is no maintenance
- Suitable for all rooms including kitchens
- May be retro fitted depending on floor type
- Thin insulated and protected heating film
- Lengths 585mm to 5600mm
- Supplied as rolls 500 or 540mm wide
- Output from 44 to 486 Watts per roll
- Average output from 80 to 175Watts/m²
- A range of control accessories
- Optional quick connection lines

For specifications, see page 69 to 70

HOGGAR

HEATING CABLE MATS FOR INSTALLATION UNDER TILES

HOGGAR Heating cable is supplied as a pre-sized mat to be placed on top of the concrete sub floor and incorporated within the tile cement. A level layer of tile cement is laid over the heating mat and then, tiles are positioned. After drying out and decorating, the heating system is ready to run. In this way, the whole floor surface, except areas to be covered by fixed furniture, will be turned into a large and gentle radiant heat source, ensuring even, gentle and invisible heating for the room.





The product for under tile installation

- Comfortable efficient radiant heating
- For use under tiles or wooden floors
- A warm pleasant floor, comfortable to the touch
- Invisible - frees wall space
- Supplied as easy-to-install mats with pre-spaced cable
- Simple to install, there is no maintenance
- Suitable for all rooms including kitchens and wet rooms
- 14 sizes from 1 to 15 m²
- Outputs from 120 to 1800 Watts
- 0.5 m wide mats
- A range of control accessories
- Multi layer, durable heating cable

For specifications, see page 70

TENERE

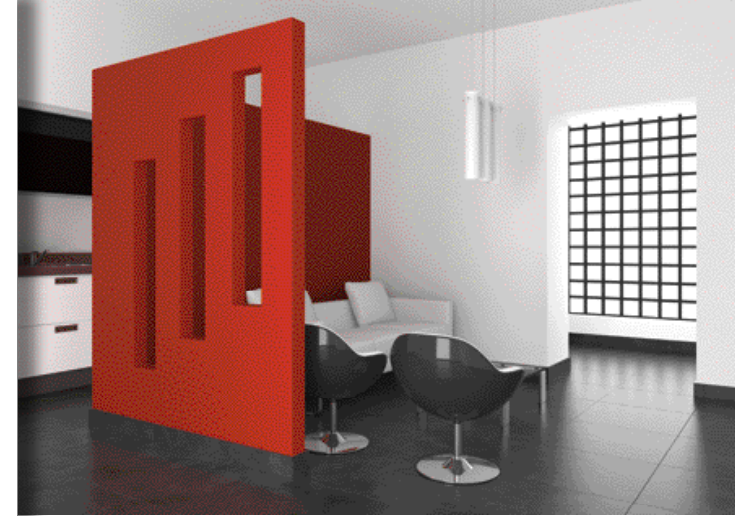
IN CONCRETE HEATING CABLE

TENERE Radiant Underfloor Heating is supplied as cable rolls, pre-sized or elastic (adjustable) mats.

The heating mats are incorporated into the floor at the time of construction. Cable in roll or mat is set into wet concrete, secured in place with plastic pegs and then, covered by a level surface of concrete of 30 to 40mm.

When the slab is dry the floor is completed.

As with all floor heating, it is important that there is a layer of insulation below the heating mat to prevent heat loss from the back surface. After drying out and decorating, the heating system is ready to run. In this way, the whole floor surface, except areas to be covered by fixed furniture, will be turned into a large and gentle radiant heat source, ensuring even, gentle and invisible heating for the room.





The most conventional heating cable in Europe

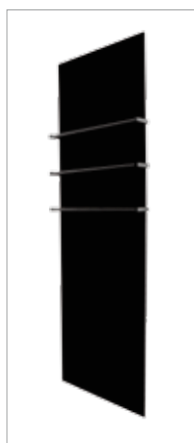
- Comfortable efficient radiant heating
- For use in concrete floors
- A warm pleasant floor, comfortable to the touch
- Invisible - frees wall space
- Simple to install and no maintenance
- Suitable for all rooms including kitchens and wet rooms
- Multi layer, durable heating cable
- Available as cable rolls, mats or elastic mats
- 17 lengths from 9m to 152m
- Outputs from 150 to 2600 Watts
- 0.5m or 0.85m wide mats
- 17 sizes of mats from 1 to 22 m²
- Outputs from 150 to 2600 Watts
- A range of control accessories



DIAMANT RANGE

100% GLASS RADIATOR WITH BRUSHED STAINLESS FRAME (OPTIONAL TOWEL DRYERS)

(P 8-11)



LOW

LOW Without Control	LOW With RF Control	Power [W]	Width [mm]	Height [mm]	Colours	Weight [kg]
GLASR0600600-01	GLASR0600600-11	400	600	600	White	10
GLASR0600600-02	GLASR0600600-12	400	600	600	Cream	10
GLASR0600600-03	GLASR0600600-13	400	600	600	Yellow	10
GLASR0600600-04	GLASR0600600-14	400	600	600	Green	10
GLASR0600600-05	GLASR0600600-15	400	600	600	Orange	10
GLASR0600600-06	GLASR0600600-16	400	600	600	Red	10
GLASR0600600-09	GLASR0600600-19	400	600	600	Grey	10
GLASR0600600-10	GLASR0600600-20	400	600	600	Black	10
GLASR0600600-08	GLASR0600600-18	400	600	600	MIRROR	10

MEDIUM

MEDIUM Without Control	MEDIUM With RF Control	Power [W]	Width [mm]	Height [mm]	Colours	Weight [kg]
GLASR1200600-01	GLASR1200600-11	750	600	1200	White	21
GLASR1200600-02	GLASR1200600-12	750	600	1200	Cream	21
GLASR1200600-03	GLASR1200600-13	750	600	1200	Yellow	21
GLASR1200600-04	GLASR1200600-14	750	600	1200	Green	21
GLASR1200600-05	GLASR1200600-15	750	600	1200	Orange	21
GLASR1200600-06	GLASR1200600-16	750	600	1200	Red	21
GLASR1200600-09	GLASR1200600-19	750	600	1200	Grey	21
GLASR1200600-10	GLASR1200600-20	750	600	1200	Black	21
GLASR1200600-08	GLASR1200600-18	750	600	1200	MIRROR	21

HIGH

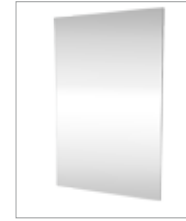
HIGH Without Control	HIGH With RF Control	Power [W]	Width [mm]	Height [mm]	Colours	Weight [kg]
GLASR1800600-01	GLASR1800600-11	1100	600	1800	White	30
GLASR1800600-02	GLASR1800600-12	1100	600	1800	Cream	30
GLASR1800600-03	GLASR1800600-13	1100	600	1800	Yellow	30
GLASR1800600-04	GLASR1800600-14	1100	600	1800	Green	30
GLASR1800600-05	GLASR1800600-15	1100	600	1800	Orange	30
GLASR1800600-06	GLASR1800600-16	1100	600	1800	Red	30
GLASR1800600-09	GLASR1800600-19	1100	600	1800	Grey	30
GLASR1800600-10	GLASR1800600-20	1100	600	1800	Black	30
GLASR1800600-08	GLASR1800600-18	1100	600	1800	MIRROR	30

ACCESSORIES

Reference	Description	Width [mm]
GLASKBRC600-01	Towel hanging rail, chrome tube	600
THEF012	Programmable thermostat radio frequency with receiver	
THEF012R	Receiver only for THEF012	



600 x 600



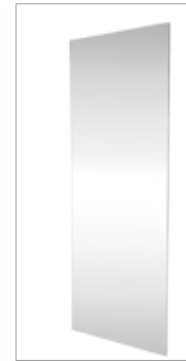
Decorative Mirror

COLOURS RANGE

(P 8-11)



600 x 1200



Decorative Mirror



600 x 1800

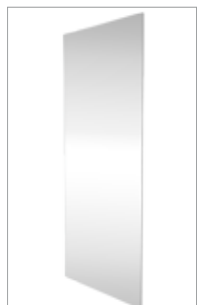


Decorative Mirror

CRYSTAL RANGE

GLASS RADIATOR
ALUMINIUM TRIMMED
400mm WIDTH
(OPTIONAL TOWEL DRYERS)

(P 12-13)



Decorative Mirror



SLIM LOW

LOW Without Control	LOW With RF Control	Power [W]	Width [mm]	Height [mm]	Colours	Weight [kg]
GLASA0600400-01	GLASA0600400-11	250	400	600	White	4
GLASA0600400-02	GLASA0600400-12	250	400	600	Cream	4
GLASA0600400-03	GLASA0600400-13	250	400	600	Yellow	4
GLASA0600400-04	GLASA0600400-14	250	400	600	Green	4
GLASA0600400-05	GLASA0600400-15	250	400	600	Orange	4
GLASA0600400-06	GLASA0600400-16	250	400	600	Red	4
GLASA0600400-09	GLASA0600400-19	250	400	600	Grey	4
GLASA0600400-10	GLASA0600400-20	250	400	600	Black	4
GLASA0600400-08	GLASA0600400-18	250	400	600	MIRROR	4

SLIM MEDIUM

MEDIUM Without Control	MEDIUM With RF Control	Power [W]	Width [mm]	Height [mm]	Colours	Weight [kg]
GLASA1200400-01	GLASA1200400-11	500	400	1200	White	14
GLASA1200400-02	GLASA1200400-12	500	400	1200	Cream	14
GLASA1200400-03	GLASA1200400-13	500	400	1200	Yellow	14
GLASA1200400-04	GLASA1200400-14	500	400	1200	Green	14
GLASA1200400-05	GLASA1200400-15	500	400	1200	Orange	14
GLASA1200400-06	GLASA1200400-16	500	400	1200	Red	14
GLASA1200400-09	GLASA1200400-19	500	400	1200	Grey	14
GLASA1200400-10	GLASA1200400-20	500	400	1200	Black	14
GLASA1200400-08	GLASA1200400-18	500	400	1200	MIRROR	14

SLIM HIGH

HIGH Without Control	HIGH With RF Control	Power [W]	Width [mm]	Height [mm]	Colours	Weight [kg]
GLASA1800400-01	GLASA1800400-11	750	400	1800	White	19
GLASA1800400-02	GLASA1800400-12	750	400	1800	Cream	19
GLASA1800400-03	GLASA1800400-13	750	400	1800	Yellow	19
GLASA1800400-04	GLASA1800400-14	750	400	1800	Green	19
GLASA1800400-05	GLASA1800400-15	750	400	1800	Orange	19
GLASA1800400-06	GLASA1800400-16	750	400	1800	Red	19
GLASA1800400-09	GLASA1800400-19	750	400	1800	Grey	19
GLASA1800400-10	GLASA1800400-20	750	400	1800	Black	19
GLASA1800400-08	GLASA1800400-18	750	400	1800	MIRROR	19

ACCESSORIES

Reference	Description	Width [mm]
GLASKBPC400-01	Towel hanging rail, chrome plate, 400mm	400
THEF012	Programmable thermostat radio frequency with receiver	
THEF012R	Receiver only for THEF012	

LARGE LOW

LOW Without Control	LOW With RF Control	Power [W]	Width [mm]	Height [mm]	Colours	Weight [kg]
GLASA0600600-01	GLASA0600600-11	400	600	600	White	5
GLASA0600600-02	GLASA0600600-12	400	600	600	Cream	5
GLASA0600600-03	GLASA0600600-13	400	600	600	Yellow	5
GLASA0600600-04	GLASA0600600-14	400	600	600	Green	5
GLASA0600600-05	GLASA0600600-15	400	600	600	Orange	5
GLASA0600600-06	GLASA0600600-16	400	600	600	Red	5
GLASA0600600-09	GLASA0600600-19	400	600	600	Grey	5
GLASA0600600-10	GLASA0600600-20	400	600	600	Black	5
GLASA0600600-08	GLASA0600600-18	400	600	600	MIRROR	5

LARGE MEDIUM

MEDIUM Without Control	MEDIUM With RF Control	Power [W]	Width [mm]	Height [mm]	Colours	Weight [kg]
GLASA1200600-01	GLASA1200600-11	750	600	1200	White	16
GLASA1200600-02	GLASA1200600-12	750	600	1200	Cream	16
GLASA1200600-03	GLASA1200600-13	750	600	1200	Yellow	16
GLASA1200600-04	GLASA1200600-14	750	600	1200	Green	16
GLASA1200600-05	GLASA1200600-15	750	600	1200	Orange	16
GLASA1200600-06	GLASA1200600-16	750	600	1200	Red	16
GLASA1200600-09	GLASA1200600-19	750	600	1200	Grey	16
GLASA1200600-10	GLASA1200600-20	750	600	1200	Black	16
GLASA1200600-08	GLASA1200600-18	750	600	1200	MIRROR	16

LARGE HIGH

HIGH Without Control	HIGH With RF Control	Power [W]	Width [mm]	Height [mm]	Colours	Weight [kg]
GLASA1800600-01	GLASA1800600-11	1100	600	1800	White	23
GLASA1800600-02	GLASA1800600-12	1100	600	1800	Cream	23
GLASA1800600-03	GLASA1800600-13	1100	600	1800	Yellow	23
GLASA1800600-04	GLASA1800600-14	1100	600	1800	Green	23
GLASA1800600-05	GLASA1800600-15	1100	600	1800	Orange	23
GLASA1800600-06	GLASA1800600-16	1100	600	1800	Red	23
GLASA1800600-09	GLASA1800600-19	1100	600	1800	Grey	23
GLASA1800600-10	GLASA1800600-20	1100	600	1800	Black	23
GLASA1800600-08	GLASA1800600-18	1100	600	1800	MIRROR	23

ACCESSORIES

Reference	Description	Width [mm]
GLASKBPC600-01	Towel hanging rail, chrome plate, 600mm	600
THEF012	Programmable thermostat radio frequency with receiver	
THEF012R	Receiver only for THEF012	

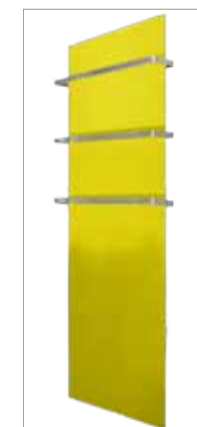
CRYSTAL RANGE

600mm WIDTH
(OPTIONAL TOWEL DRYERS)

(P 12-13)



Decorative Mirror



CERAMIC RANGE

CERAMIC RADIATOR
ALUMINIUM TRIMMED
(OPTIONAL TOWEL DRYERS)

(P 14-15)



SLIM

SLIM Without Control	SLIM With RF Control	Power [W]	Width [mm]	Height [mm]	Colours	Weight [kg]
GLASC0600400-01	GLASC0600400-11	250	400	600	White	4
GLASC1200400-01	GLASC1200400-11	500	400	1200	White	14
GLASC1800400-01	GLASC1800400-11	750	400	1800	White	19
GLASC0600400-10	GLASC0600400-20	250	400	600	Graphit	4
GLASC1200400-10	GLASC1200400-20	500	400	1200	Graphit	14
GLASC1800400-10	GLASC1800400-20	750	400	1800	Graphit	19

LARGE

LARGE Without Control	LARGE With RF Control	Power [W]	Width [mm]	Height [mm]	Colours	Weight [kg]
GLASC0600600-01	GLASC0600600-11	400	600	600	White	5
GLASC1200600-01	GLASC1200600-11	750	600	1200	White	16
GLASC1800600-01	GLASC1800600-11	1100	600	1800	White	23
GLASC0600600-10	GLASC0600600-20	400	600	600	Graphit	5
GLASC1200600-10	GLASC1200600-20	750	600	1200	Graphit	16
GLASC1800600-10	GLASC1800600-20	1100	600	1800	Graphit	23

ACCESSORIES

Reference	Description	Width [mm]
GLASKBPC400-01	Towel hanging rail, chrome plate, 400mm	400
GLASKBPC600-01	Towel hanging rail, chrome plate, 600mm	600
THEF012	Programmable thermostat radio frequency with receiver	
THEF012R	Receiver only for THEF012	

SMALL

SMALL Without Regulation	Power [W]	Width [mm]	Height [mm]	Colours	Weight [kg]
GPHAS5900400-01	400	590	400	White	10
GPHAS5900400-06	400	590	400	Red	10
GPHAS5900400-10	400	590	400	Black	10

MEDIUM

MEDIUM Without Regulation	Power [W]	Width [mm]	Height [mm]	Colours	Weight [kg]
GPHAS5900800-01	800	590	800	White	20
GPHAS5900800-06	800	590	800	Red	20
GPHAS5900800-10	800	590	800	Black	20

LARGE

LARGE Without Regulation	Power [W]	Width [mm]	Height [mm]	Colours	Weight [kg]
GPHAS1170400-01	800	1170	400	White	20
GPHAS1170400-06	800	1170	400	Red	20
GPHAS1170400-10	800	1170	400	Black	20

EXTRA LARGE

EXTRA LARGE Without Regulation	Power [W]	Width [mm]	Height [mm]	Colours	Weight [kg]
GPHAS1140600-01	1200	1140	590	White	29
GPHAS1140600-06	1200	1140	590	Red	29
GPHAS1140600-10	1200	1140	590	Black	29

ACCESSORIES

Reference	Description
THEF012	Programmable thermostat radio frequency with receiver
THEF012R	Receiver only for THEF012

GRANIT RANGE LATENT HEAT RADIATOR

(P 16-17)



AGATE RANGE DECORATIVE RADIANT PANELS

(P 18-21)



STANDARD PICTURES RANGE (All pictures available on www.ilo-international.com)

LOW 400 WATTS

Reference	Panel specifications	Power [W]	Width [mm]	Height [mm]	Weight [kg]
CASD1100585-51A	AGATE 400W-230V-595x595x30-Class I-IP20 - Aluminium colour frame	400	600	600	4
CASD1100585-51B	AGATE 400W-230V-595x595x30-Class I-IP20 - Black colour frame	400	600	600	4

MEDIUM 750 WATTS

Reference	Panel specifications	Power [W]	Width [mm]	Height [mm]	Weight [kg]
CASD1100585-52A	AGATE 750W-230V-1190x595x30-Class I-IP20 - Aluminium colour frame	750	1200	600	8
CASD1100585-52B	AGATE 750W-230V-1190x595x30-Class I-IP20 - Black colour frame	750	1200	600	8

SQUARE 1100 WATTS

Reference	Panel specifications	Power [W]	Width [mm]	Height [mm]	Weight [kg]
CASD1100510-52A	AGATE 1100W-230V-1050x1050x30-Class I-IP20 - Aluminium colour frame	1100	1050	1050	12
CASD1100510-52B	AGATE 1100W-230V-1050x1050x30-Class I-IP20 - Black colour frame	1100	1050	1050	12

HIGH 1100 WATTS

Référence	Description	Power [W]	Width [mm]	Height [mm]	Weight [kg]
CASD1100585-53A	AGATE 1100W-230V-1800x595x30-Class I-IP20 - Aluminium colour frame	1100	1800	600	13
CASD1100585-53B	AGATE 1100W-230V-1800x595x30-Class I-IP20 - Black colour frame	1100	1800	600	13

HIGH + 1200 WATTS

Reference	Panel specifications	Power [W]	Width [mm]	Height [mm]	Weight [kg]
CASD1100490-52A	AGATE 1200W-230V-1200x1000x30-Class I-IP20 - Aluminium colour frame	1200	1200	1000	14
CASD1100490-52B	AGATE 1200W-230V-1200x1000x30-Class I-IP20 - Black colour frame	1200	1200	1000	14

ACCESSORIES

Reference	Description
THEF012	Programmable thermostat radio frequency with receiver
THEF012R	Receiver only for THEF012

LOW 400 WATTS

Reference	Panel specifications	Power [W]	Width [mm]	Height [mm]	Weight [kg]
CASA1100585-51A	AGATE Artist 400W-230V-595x595x30-Class I-IP20 - Aluminium colour frame	400	600	600	4
CASA1100585-51B	AGATE Artist 400W-230V-595x595x30-Class I-IP20 - Black colour frame	400	600	600	4

MEDIUM 750 WATTS

Reference	Panel specifications	Power [W]	Width [mm]	Height [mm]	Weight [kg]
CASA1100585-52A	AGATE Artist 750W-230V-1190x595x30-Class I-IP20 - Aluminium colour frame	750	1200	600	8
CASA1100585-52B	AGATE Artist 750W-230V-1190x595x30-Class I-IP20 - Black colour frame	750	1200	600	8

SQUARE 1100 WATTS

Reference	Panel specifications	Power [W]	Width [mm]	Height [mm]	Weight [kg]
CASA1100510-52A	AGATE Artist 1100W-230V-1050x1050x30-Class I-IP20 - Aluminium colour frame	1100	1050	1050	12
CASA1100510-52B	AGATE Artist 1100W-230V-1050x1050x30-Class I-IP20 - Black colour frame	1100	1050	1050	8

HIGH 1100 WATTS

Reference	Panel specifications	Power [W]	Width [mm]	Height [mm]	Weight [kg]
CASA1100585-53A	AGATE Artist 1100W-230V-1800x595x30-Class I-IP20 - Aluminium colour frame	1100	1800	600	13
CASA1100585-53B	AGATE Artist 1100W-230V-1800x595x30-Class I-IP20 - Black colour frame	1100	1800	600	13

HIGH + 1200 WATTS

Reference	Panel specifications	Power [W]	Width [mm]	Height [mm]	Weight [kg]
CASA1100490-52A	AGATE Artist 1200W-230V-1200x1000x30-Class I-IP20 - Aluminium colour frame	1200	1200	1000	14
CASA1100490-52B	AGATE Artist 1200W-230V-1200x1000x30-Class I-IP20 - Black colour frame	1200	1200	1000	14

ACCESSORIES

Reference	Description
THEF012	Programmable thermostat radio frequency with receiver
THEF012R	Receiver only for THEF012

AGATE RANGE

DECORATIVE RADIANT PANELS

(P 18-21)



AGATE RANGE DECORATIVE RADIANT PANELS

(P 18-21)



CHANGE YOUR STANDARD OR ARTWORK PICTURES (All pictures available on www.ilo-international.com)

ILO LIBRARY PICTURES

Reference	Standard Pictures Specifications	Width [mm]	Height [mm]	Weight [kg]
TDEC0600-01	Aluminium plate 600x600 with your selected picture	600	600	1
TDEC1200-01	Aluminium plate 600x1200 with your selected picture	600	1200	2
TDEC1050-01	Aluminium plate 1050x1050 with your selected picture	1050	1050	3
TDEC1000-01	Aluminium plate 1000x1200 with your selected picture	1000	1200	3
TDEC1800-01	Aluminium plate 600x1800 with your selected picture	600	1800	3

CREATE YOUR OWN PICTURE* (Special quality picture is required)

YOUR PERSONAL PICTURE

Reference	Personal Pictures Specifications	Width [mm]	Height [mm]	Weight [kg]
TDEP0600-01	Aluminium plate 600x600 with your personal picture	600	600	1
TDEP1200-01	Aluminium plate 600x1200 with your personal picture	600	1200	2
TDEP1050-01	Aluminium plate 1050x1050 with your personal picture	1050	1050	3
TDEP1000-01	Aluminium plate 1000x1200 with your personal picture	1000	1200	3
TDEP1800-01	Aluminium plate 600x1800 with your personal picture	600	1800	3

* ILO reserves the right to refuse any picture where the quality or the size would not meet ILO requirements to create a perfect product

EUROPEAN PLUG

Reference	Heated Mat Specifications	Colour	Power [W]	Width [mm]	Length [mm]
TAPI450600-01	Heated Mat Comfort SAND Grey 600x450 - 65W/230V - European single plug	Grey	65	600	450
TAPI450600-02	Heated Mat Comfort SAND Blue 600x450 - 65W/230V - European single plug	Blue	65	600	450
TAPI450600-03	Heated Mat Comfort SAND Brown 600x450 - 65W/230V - European single plug	Brown	65	600	450
TAPI450600-04	Heated Mat Comfort SAND Black 600x450 - 65W/230V - European single plug	Black	65	600	450
TAPI450600-05	Heated Mat Comfort SAND Green 600x450 - 65W/230V - European single plug	Green	65	600	450
TAPI900600-01	Heated Mat Comfort SAND Grey 600x900 - 170W/230V - European single plug	Grey	170	600	900
TAPI900600-02	Heated Mat Comfort SAND Blue 600x900 - 170W/230V - European single plug	Blue	170	600	900
TAPI900600-03	Heated Mat Comfort SAND Brown 600x900 - 170W/230V - European single plug	Brown	170	600	900
TAPI900600-04	Heated Mat Comfort SAND Black 600x900 - 170W/230V - European single plug	Black	170	600	900
TAPI900600-05	Heated Mat Comfort SAND Green 600x900 - 170W/230V - European single plug	Green	170	600	900

EUROPEAN PLUG ILO PVC MATS SPECIFICATIONS

Reference	Heated Mat Specifications	Colour	Power [W]	Width [mm]	Length [mm]
TAPV900600-01	Waterproof Heated Mat PVC Black 600x900-170W/230V - European single plug	Black	170	600	900

UK PLUG ILO COMFORT MATS SPECIFICATIONS

Reference	Heated Mat Specifications	Colour	Power [W]	Width [mm]	Length [mm]
TAPI450600-11	Heated Mat Comfort SAND Grey 600x450 - 65W/230V - UK plug	Grey	65	600	450
TAPI450600-12	Heated Mat Comfort SAND Blue 600x450 - 65W/230V - UK plug	Blue	65	600	450
TAPI450600-13	Heated Mat Comfort SAND Brown 600x450 - 65W/230V - UK plug	Brown	65	600	450
TAPI450600-14	Heated Mat Comfort SAND Black 600x450 - 65W/230V - UK plug	Black	65	600	450
TAPI450600-15	Heated Mat Comfort SAND Green 600x450 - 65W/230V - UK plug	Green	65	600	450
TAPI900600-11	Heated Mat Comfort SAND Grey 600x900 - 170W/230V - UK plug	Grey	170	600	900
TAPI900600-12	Heated Mat Comfort SAND Blue 600x900 - 170W/230V - UK plug	Blue	170	600	900
TAPI900600-13	Heated Mat Comfort SAND Brown 600x900 - 170W/230V - UK plug	Brown	170	600	900
TAPI900600-14	Heated Mat Comfort SAND Black 600x900 - 170W/230V - UK plug	Black	170	600	900
TAPI900600-15	Heated Mat Comfort SAND Green 600x900 - 170W/230V - UK plug	Green	170	600	900

UK PLUG ILO PVC MATS SPECIFICATIONS

Reference	Heated Mat Specifications	Colour	Power [W]	Width [mm]	Length [mm]
TAPV900600-11	Waterproof Heated Mat PVC Black 600x900-170W/230V - UK plug	Black	170	600	900

SAND RANGE HEATED CARPET

(P 22-23)



OPAL RANGE

MIRROR DEMISTER FILM

(P 24-25)



ILO COMFORT MIRROR DEMISTERS SPECIFICATIONS 12 VOLTS

Reference	Description	Power [W]	Width [mm]	Length [mm]
FMIR165300-01	Demister Film OPAL - 15W-12V - 300x300 - Class II	15	300	300

ILO COMFORT MIRROR DEMISTERS SPECIFICATIONS 230 VOLTS

Reference	Description	Power [W]	Width [mm]	Length [mm]
FMIR175500-01	Demister Film OPAL - 44W-230V - 500x585 - Class II	44	500	585

Reference	Description	Power [W]	Width [mm]	Length [mm]
FMIR200400-01	Demister Film OPAL - 40W-230V - 400x600 - Class II	40	400	600
FMIR200400-03	Demister Film OPAL - 80W-230V - 400x1200 - Class II	80	400	1200
FMIR200401-01	Demister Film OPAL - 40W-230V - 400x700 - Class II	40	400	700
FMIR200402-02	Demister Film OPAL - 40W-230V - 400x500 - Class II	40	400	500

Reference	Description	Power [W]	Width [mm]	Length [mm]
FMIR200550-01	Demister Film OPAL - 128W-230V - 1100x600 - Class II	128	1100	600
FMIR200550-02	Demister Film OPAL - 64W-230V - 550x600 - Class II	64	550	600
FMIR200550-04	Demister Film OPAL - 192W-230V - 1650x600 - Class II	192	1650	600
FMIR200551-01	Demister Film OPAL - 64W-230V - 550x600 - Class II	64	550	600
FMIR200552-01	Demister Film OPAL - 78W-230V - 550x800 - Class II	78	550	800
FMIR200600-01	Demister Film OPAL - 180W-230V - 600x1800 - Class II	180	600	1800
FMIR350701-01	Demister Film OPAL - 110W-230V - 690x775 - Class II	110	690	775
FMIR430702-01	Demister Film OPAL - 70W-230V - 480x690 - Class II	70	480	690

Reference	Description	Power [W]	Width [mm]	Length [mm]
FMIR240275-02	Demister Film OPAL - 70W-230V - 275x1170 - Class II	70	275	1170

Reference	Description	Power [W]	Width [mm]	Length [mm]
FMIR250275-01	Demister Film OPAL - 38W-230V - 275x625 - Class II	38	275	625
FMIR250350-01	Demister Film OPAL - 30W-230V - 350x350 - Class II	30	350	350

WIDTH 540mm - 135W/m²

Reference	Description	Power [W]	Width [mm]	Length [mm]
MODP135600-01	Module ALTAIR 135W/m ² -44W-230V - 540x585x12mm	44	540	585
MODP135600-02	Module ALTAIR 135W/m ² -88W-230V - 540x1170x12mm	88	540	1170

WIDTH 540mm - 175W/m²

Reference	Description	Power [W]	Width [mm]	Length [mm]
MODP175600-01	Module ALTAIR 175W/m ² -54W-230V - 540x585x12mm	54	540	585
MODP175600-02	Module ALTAIR 175W/m ² -108W-230V - 540x1170x12mm	108	540	1170

WIDTH 340mm - 175W/m²

Reference	Description	Power [W]	Width [mm]	Length [mm]
MODP175400-01	Module ALTAIR 175W/m ² -34W-230V - 340x585x12mm	39	340	585
MODP175400-02	Module ALTAIR 175W/m ² -68W-230V - 340x1170x12mm	78	340	1170

ACCESSORIES QUICK CONNECTION LINES

Reference	Description	Dimensions	Distance spacing	Cable length
		Total Length [mm]	[mm]	to first socket [m]
DE90006-01	Quick connection line - 6 connections	10	1200	4
DE90010-02	Quick connection line - 10 connections	14.8	1200	4
DE90014-01	Quick connection line - 14 connections	19.6	1200	4
DE90018-01	Quick connection line - 18 connections	24.4	1200	4
DE90024-01	Quick connection line - 24 connections	31.6	1200	4

THERMOSTATS

Reference	Description
THER007	Pilot wire (to be used with a central clock)
THER008	Flush mounting, digital, programmable thermostat
THEF012	Programmable thermostat, radio frequency with receiver
THEF012R	Receiver only for THEF012

KITS

Reference	Description	Packaging	Power [W]	Packaging Size [mm]			Weight [kg]
RPKP0776-01	Kit ALTAIR 8 m ²	1xA	776	1220	660	200	12,5
RPKP1164-01	Kit ALTAIR 12 m ²	1xB	1164	1220	660	260	18,0
RPKPN003-01	KIT ALTAIR 6 Neutral Modules	1xC	0	1220	660	260	10

Box A

Composition KIT RPKP0776 (8m² covering) :
 8 Modules MODP135600-02
 1 Thermostat THER008
 1 Quick Connection Line DE90010-01

Box B

Composition KIT RPKP1164 (12m² covering) :
 12 Modules MODP135600-02
 1 Thermostat THER008
 1 Quick Connexion Line DE90014-01

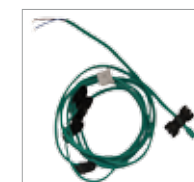
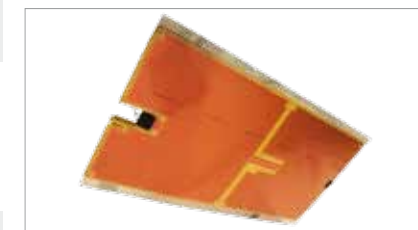
Box C

Composition KIT RPKSN003 (3.8m² covering) :
 6 Modules MODP000000-02

ALTAIR RANGE

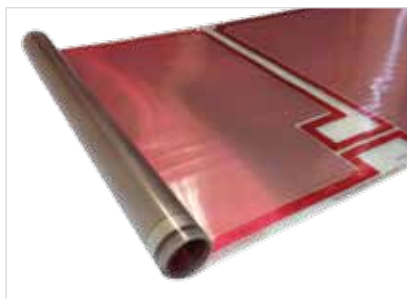
FULL KIT RADIANT CEILING FOR RESIDENTIAL, COMMERCIAL OR OFFICES (GYPSUM BOARD, PANNELLING, SUSPENDED CEILING ...)

(P 28-29)



VEGA RANGE

FILM IN ROLL
FOR RESIDENTIAL
RADIANT CEILING
(PLASTERBOARD, PANNELLING,
SUSPENDED CEILING ...)
(P 30-31)



WIDTH 400mm - 135W/m²

Reference	Description	Power [W]	Width [mm]	Length [mm]
FADR135400-01	Heating Film Roll VEGA 135W/m ² -26W-230V - 400x585	26	400	585
FADR135400-02	Heating Film Roll VEGA 135W/m ² -52W-230V - 400x1170	52	400	1170
FADR135400-03	Heating Film Roll VEGA 135W/m ² -78W-230V - 400x1755	78	400	1755
FADR135400-04	Heating Film Roll VEGA 135W/m ² -104W-230V - 400x2340	104	400	2340
FADR135400-05	Heating Film Roll VEGA 135W/m ² -130W-230V - 400x2925	130	400	2925
FADR135400-06	Heating Film Roll VEGA 135W/m ² -156W-230V - 400x3510	156	400	3510
FADR135400-07	Heating Film Roll VEGA 135W/m ² -182W-230V - 400x4095	182	400	4095
FADR135400-08	Heating Film Roll VEGA 135W/m ² -208W-230V - 400x4680	208	400	4680
FADR135400-09	Heating Film Roll VEGA 135W/m ² -234W-230V - 400x5265	234	400	5265

WIDTH 500mm - 135W/m²

Reference	Description	Power [W]	Width [mm]	Length [mm]
FADR135500-01	Heating Film Roll VEGA 135W/m ² -34W-230V - 500x585	34	500	585
FADR135500-02	Heating Film Roll VEGA 135W/m ² -68W-230V - 500x1170	68	500	1170
FADR135500-03	Heating Film Roll VEGA 135W/m ² -102W-230V - 500x1755	102	500	1755
FADR135500-04	Heating Film Roll VEGA 135W/m ² -136W-230V - 500x2340	136	500	2340
FADR135500-05	Heating Film Roll VEGA 135W/m ² -170W-230V - 500x2925	170	500	2925
FADR135500-06	Heating Film Roll VEGA 135W/m ² -204W-230V - 500x3510	204	500	3510
FADR135500-07	Heating Film Roll VEGA 135W/m ² -238W-230V - 500x4095	238	500	4095
FADR135500-08	Heating Film Roll VEGA 135W/m ² -272W-230V - 500x4680	272	500	4680
FADR135500-09	Heating Film Roll VEGA 135W/m ² -306W-230V - 500x5265	306	500	5265

WIDTH 600mm - 135W/m²

Reference	Description	Power [W]	Width [mm]	Length [mm]
FADR135600-01	Heating Film Roll VEGA 135W/m ² -44W-230V - 600x585	44	600	585
FADR135600-02	Heating Film Roll VEGA 135W/m ² -88W-230V - 600x1170	88	600	1170
FADR135600-03	Heating Film Roll VEGA 135W/m ² -132W-230V - 600x1755	132	600	1755
FADR135600-04	Heating Film Roll VEGA 135W/m ² -176W-230V - 600x2340	176	600	2340
FADR135600-05	Heating Film Roll VEGA 135W/m ² -220W-230V - 600x2925	220	600	2925
FADR135600-06	Heating Film Roll VEGA 135W/m ² -264W-230V - 600x3510	264	600	3510
FADR135600-07	Heating Film Roll VEGA 135W/m ² -308W-230V - 600x4095	308	600	4095
FADR135600-08	Heating Film Roll VEGA 135W/m ² -352W-230V - 600x4680	352	600	4680
FADR135600-09	Heating Film Roll VEGA 135W/m ² -396W-230V - 600x5265	396	600	5265

SPECIAL WATTAGE SPECIFICATIONS
WIDTH 500mm - 80W/m²

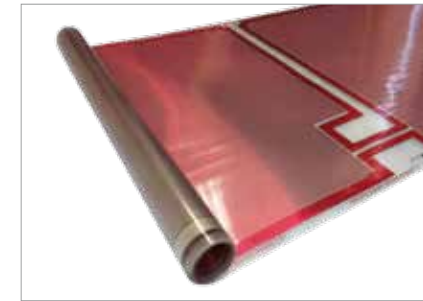
Reference	Description	Power [W]	Width [mm]	Length [mm]
FADR080500-01	Heating Film Roll VEGA 80W/m ² -32W-230V - 500x800	32	500	800
FADR080500-02	Heating Film Roll VEGA 80W/m ² -64W-230V - 500x1600	64	500	1600
FADR080500-03	Heating Film Roll VEGA 80W/m ² -96W-230V - 500x2400	96	500	2400
FADR080500-04	Heating Film Roll VEGA 80W/m ² -128W-230V - 500x3200	128	500	3200
FADR080500-05	Heating Film Roll VEGA 80W/m ² -160W-230V - 500x4000	160	500	4000
FADR080500-06	Heating Film Roll VEGA 80W/m ² -192W-230V - 500x4800	192	500	4800
FADR080500-07	Heating Film Roll VEGA 80W/m ² -224W-230V - 500x5600	224	500	5600

VEGA RANGE

(P 30-31)

WIDTH 400mm - 175W/m²

Reference	Description	Power [W]	Width [mm]	Length [mm]
FADR175400-01	Heating Film Roll VEGA 175W/m ² -34W-230V - 400x585	34	400	585
FADR175400-02	Heating Film Roll VEGA 175W/m ² -78W-230V - 400x1170	78	400	1170
FADR175400-03	Heating Film Roll VEGA 175W/m ² -108W-230V - 400x1755	108	400	1755
FADR175400-04	Heating Film Roll VEGA 175W/m ² -144W-230V - 400x2340	144	400	2340
FADR175400-05	Heating Film Roll VEGA 175W/m ² -180W-230V - 400x2925	180	400	2925
FADR175400-06	Heating Film Roll VEGA 175W/m ² -214W-230V - 400x3510	214	400	3510
FADR175400-07	Heating Film Roll VEGA 175W/m ² -248W-230V - 400x4095	248	400	4095
FADR175400-08	Heating Film Roll VEGA 175W/m ² -280W-230V - 400x4680	280	400	4680
FADR175400-09	Heating Film Roll VEGA 175W/m ² -316W-230V - 400x5265	316	400	5265



WIDTH 500mm - 175W/m²

Reference	Description	Power [W]	Width [mm]	Length [mm]
FADR175500-01	Heating Film Roll VEGA 175W/m ² -45W-230V - 500x585	45	500	585
FADR175500-02	Heating Film Roll VEGA 175W/m ² -90W-230V - 500x1170	90	500	1170
FADR175500-03	Heating Film Roll VEGA 175W/m ² -135W-230V - 500x1755	135	500	1755
FADR175500-04	Heating Film Roll VEGA 175W/m ² -180W-230V - 500x2340	180	500	2340
FADR175500-05	Heating Film Roll VEGA 175W/m ² -220W-230V - 500x2925	220	500	2925
FADR175500-06	Heating Film Roll VEGA 175W/m ² -264W-230V - 500x3510	264	500	3510
FADR175500-07	Heating Film Roll VEGA 175W/m ² -308W-230V - 500x4095	308	500	4095
FADR175500-08	Heating Film Roll VEGA 175W/m ² -352W-230V - 500x4680	352	500	4680
FADR175500-09	Heating Film Roll VEGA 175W/m ² -396W-230V - 500x5265	396	500	5265

VEGA RANGE

(P 30-31)



WIDTH 600mm - 175W/m²

Reference	Description	Power [W]	Width [mm]	Length [mm]
FADR175600-01	Heating Film Roll VEGA 175W/m ² -54W-230V - 600x585 - Class 0	54	600	585
FADR175600-02	Heating Film Roll VEGA 175W/m ² -108W-230V - 600x1170 - Class 0	108	600	1170
FADR175600-03	Heating Film Roll VEGA 175W/m ² -162W-230V - 600x1755 - Class 0	162	600	1755
FADR175600-04	Heating Film Roll VEGA 175W/m ² -216W-230V - 600x2340 - Class 0	216	600	2340
FADR175600-05	Heating Film Roll VEGA 175W/m ² -270W-230V - 600x2925 - Class 0	270	600	2925
FADR175600-06	Heating Film Roll VEGA 175W/m ² -324W-230V - 600x3510 - Class 0	324	600	3510
FADR175600-07	Heating Film Roll VEGA 175W/m ² -378W-230V - 600x4095 - Class 0	378	600	4095
FADR175600-08	Heating Film Roll VEGA 175W/m ² -432W-230V - 600x4680 - Class 0	432	600	4680
FADR175600-09	Heating Film Roll VEGA 175W/m ² -486W-230V - 600x5265 - Class 0	486	600	5265

ACCESSORIES QUICK CONNECTION LINE

Reference	Description	Dimensions	Socket spacing	Cable length
		Total Length [m]	[mm]	to first socket [m]
DE90006-01	Quick connection line - 6 connections	10	1200	4
DE90010-02	Quick connection line - 10 connections	14.8	1200	4
DE90014-01	Quick connection line - 14 connections	19.6	1200	4
DE90018-01	Quick connection line - 18 connections	24.4	1200	4
DE90024-01	Quick connection line - 24 connections	31.6	1200	4

THERMOSTATS

Reference	Description
THER007	Pilot wire (to be used with a central clock)
THER008	Flush Mounting, Digital, Programmable Thermostat
THEF012	Programmable thermostat - radio frequency with receiver
THEF012R	Receiver only for THEF012

WIDTH 540mm - 135W/m²

Reference	Description	Power [W]	Width [mm]	Length [mm]
FRIG135600-01	Module ORION 135W/m ² -44W-230V - 540x585	44	540	585
FRIG135600-02	Module ORION 135W/m ² -88W-230V - 540x1170	88	540	1170

WIDTH 540mm - 175W/m²

Reference	Description	Power [W]	Width [mm]	Length [mm]
FRIG175600-01	Module ORION 175W/m ² -54W-230V - 540x585	54	540	585
FRIG175600-02	Module ORION 175W/m ² -108W-230V - 540x1170	108	540	1170

ACCESSORIES QUICK CONNECTION LINE

Reference	Description	Dimensions	Socket spacing	Cable length
		Total Length [m]	[mm]	to first socket [m]
DE90006-01	Quick connection line - 6 connections	10	1200	4
DE90010-02	Quick connection line - 10 connections	14.8	1200	4
DE90014-01	Quick connection line - 14 connections	19.6	1200	4
DE90018-01	Quick connection line - 18 connections	24.4	1200	4
DE90024-01	Quick connection line - 24 connections	31.6	1200	4

THERMOSTATS

Reference	Description
THER007	Pilot wire (to be used with a central clock)
THER008	Flush mounting, digital, programmable thermostat
THEF012	Programmable thermostat, radio frequency with receiver
THEF012R	Receiver only for THEF012

ORION RANGE

FULL KIT RADIANT CEILING
RESIDENTIAL, COMMERCIAL
OR OFFICES
(GYPSUM BOARD, PANELLING,
CEILING TENSE ...)

(P 32-33)



ORION RANGE

(P 32-33)



KITS

Reference	Description	Packaging	Output [W]	Dimensions of package [mm]			Weight [kg]
RPCK0132-01	Kit ORION 132W	1xA	132	1200	600	200	5,0
RPCK0264-01	Kit ORION 264W	2xA	264	1200	600	400	10,0
RPCK0396-01	Kit ORION 396W	1xB	396	1200	600	400	16,0
RPCK0528-01	Kit ORION 528W	1xA+1xB	528	1200	600	600	21,0
RPCK0660-01	Kit ORION 660W	2xA+1xC	660	1200	600	800	26,0
RPCK0792-01	Kit ORION 792W	1xB+1xC	792	1200	600	800	32,0
RPCK0924-01	Kit ORION 924W	1xA+2xC	924	1200	600	1000	37,0
RPCK1056-01	Kit ORION 1056W	2xA+2xC	1056	1200	600	1000	42,0
RPCK1188-01	Kit ORION 1188W	3xC	1188	1200	600	1200	48,0
RPCK1320-01	Kit ORION 1320W	1xA+3xC	1320	1200	600	1400	53,0
RPCK1452-01	Kit ORION 1452W	2xA+3xC	1452	1200	1200	800	58,0
RPCK1584-01	Kit ORION 1584W	4xC	1584	1200	1200	800	64,0
RPCK1716-01	Kit ORION 1716W	1xA+4xC	1716	1200	1200	1000	69,0
RPCK1848-01	Kit ORION 1848W	2xA+4xC	1848	1200	1200	1000	74,0
RPCK1980-01	Kit ORION 1980W	5xC	1980	1200	1200	1200	80,0
RPCK2244-01	Kit ORION 2244W	1xA+5C	2244	1200	1200	1200	90,0
RPCKN003-01	Kit ORION Neutral modules		0	1200	600	200	6,0

Box A (132W) :

- 1 Insulation 1200x600mm
- 1 Film 44W-585x585mm
- 1 Film 88W-585x1190mm

Box B (396W) :

- 3 Insulation 1200x600mm
- 3 Film 44W-585x585mm
- 3 Film 88W-585x1190mm

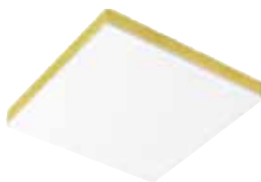
Box C (396W) :

- 3 Insulation 1200x600mm
- 1 Film 44W-585x585mm
- 4 Film 88W-585x1190mm

Each Kit includes the quick connection line and the thermostat.

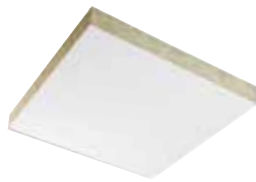
ILOFIBRE

Type	Output [W]	Edge	
FERIA BOARD			
MFBFERN-01	Neutral	B	
MFBFER200585-01	60	B	
MFBFER245585-01	75	B	
SAHARA TEGULAR			
MFTSAHN-01	Neutral	T	
MFTSAH200585-01	60	T	
FINE FISSURED BOARD			
MFBFFIN-01	Neutral	B	
MFBFFI200585-01	60	B	
MFBFFI245585-01	75	B	
FREQUENCE BOARD			
MFBFREN-01	Neutral	B	
MFBFRE200585-01	60	B	
MFBFRE245585-01	75	B	
ULTIMA BOARD			
MFBULTN-01	Neutral	B	
MFBULT200585-01	60	B	
MFBULT245585-01	75	B	
ADRIA HYGIENE BOARD			
MFBADRN-01	Neutral	B	
MFBADR135585-01	44	B	
MFBADR200585-01	60	B	
MFBADR245585-01	75	B	



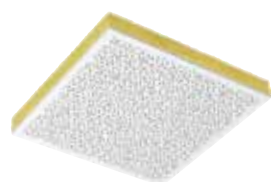
ILOFIBRE

Surface: PRIMA ARMSTRONG
 Insulation: Glass fibre 29,7 kg/m³
 Dimensions: 595x595x55 mm
 Weight: 1,8 kg, Voltage: 230V~
 Fire reaction (French standard): M1



ILOROC

Surface: FJORD 40mm
 Insulation: Rock wool 60 kg/m³
 Dimensions: 595x595x40 mm
 Weight: 1,3 kg, Voltage: 230V~
 Fire reaction (French standard): M1



ILOPLASTER

Surface: CASOPRANO from BPB PLACO
 Insulation: Glass fibre 29,7 kg/m³
 Dimensions: 595x595x48 mm
 Weight: 3,5 kg, Voltage: 230V~
 Fire reaction (French standard): M1

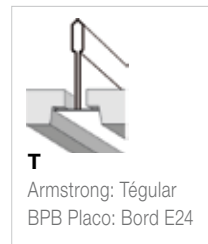
ILOROC

Type	Output [W]	Edge	
WHITE SMOOTH GLASS FIBRE BOARD			
MRBFJON-01	Neutral	B	
MRBFJO135585-01	44	B	
MRBFJO200585-01	60	B	
MRBFJO245585-01	75	B	
COLOURED SMOOTH GLASS FIBRE BOARD			
MRBCOUN-01	Neutral	B	
MRBCOU135585-01	44	B	
MRBCOU200585-01	60	B	
MRBCOU245585-01	75	B	

ILOPLASTER

Type	Output [W]	Edge	
CASOVOICE			
MP*CAVN-01	Neutral	B, T, M	
MP*CAV200585-01	60	B, T, M	
MP*CAV245585-01	75	B, T, M	
CASOSTAR			
MP*CASN-01	Neutral	B, T, M	
MP*CAS200585-01	60	B, T, M	
MP*CAS245585-01	5	B, T, M	

*Replace asterisks with required edge detail (B,T or M)
 Other models available



SIRIUS* RANGE

MODULE FOR CEILING
 HEATING IN OFFICES (P 34-35)



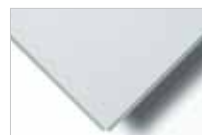
* Example of decorative tiles. Any kind of tiles on demand

SIRIUS RANGE MODULAR RADIANT HEATED CEILING

(P 34-35)

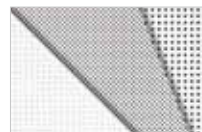
ILOMETAL

Type	Output [W]	Edge
PLAIN STEEL BOARD		
MMBACLN-01	NEUTRAL	B
MMBACL135585-01	44	B
MMBACL200585-01	60	B
MMBACL245585-01	75	B



PERFORATED STEEL BOARD

MMBACPN-01	NEUTRAL	B
MMBACP135585-01	44	B
MMBACP200585-01	60	B
MMBACP245585-01	75	B



ILOBAC

Type	Output [W]	Edge
WHITE ALUMINIUM BOARD		
MMBBACN-01	NEUTRAL	B
MMBBAC400585-01	125	B
MMBBACN-02	NEUTRAL	B
MMBBAC400585-02	250	B



ACCESSORIES QUICK CONNECTION LINE



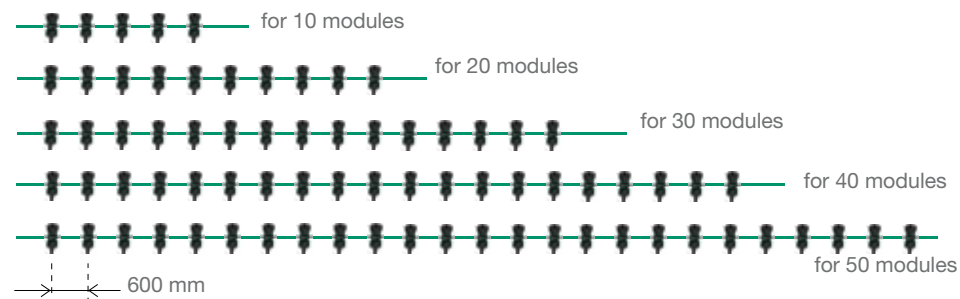
Reference	Description	Dimensions	Socket spacing	Cable length
		Total Length [m]	[mm]	to first socket [m]
DE90010-01	Special Design 90 line - 10 connections	6	600	4
DE90020-01	Special Design 90 line - 20 connections	9	600	4
DE90030-01	Special Design 90 line - 30 connections	12	600	4
DE90040-01	Special Design 90 line - 40 connections	15	600	4
DE90050-01	Special Design 90 line - 50 connections	18	600	4

THERMOSTATS



Reference	Description
THER007	Pilot wire (to be used with a central clock)
THER008	Flush mounting, digital, programmable thermostat
THEF012	Programmable thermostat, radio frequency with receiver
THEF012R	Receiver only for THEF012

Special MRC power cable



ILOMETAL
 Surface: ORCAL ARMSTRONG RAL9010
 Insulation: Rock wool 60 kg/m³
 Dimensions: 595x595x40 mm
 Weight: 2,8 kg, Voltage: 230V~
 Fire reaction (French standard): M1



ILOBAC
 Surface: Aluminium painted off white
 Insulation: Glass fibre 29,7 kg/m³
 Dimensions: 595x595x40 mm and 1195x595x40 mm
 Weight: 1,5 kg, Voltage: 230V~
 Fire reaction (French standard): M1

IP20 - "LOW TEMPERATURE" CASSETTES FOR DRY LOCATION

Reference	Power [W]	Voltage [V]	Dimensions [mm]	Weight [kg]	Surface T° [°C]	Mini/Max Mounting Height [m]
CASS560580-01	160	230	595x595x60	2.4	70	2.30/3.50
CASS560580-02	320	230	595x1195x60	4.8	70	2.30/3.50

Reference	Power [W]	Voltage [V]	Dimensions [mm]	Weight [kg]	Surface T° [°C]	Mini/Max Mounting Height [m]
CASS745580-01	225	230	595x595x60	2.4	80	2.50/3.50
CASS745580-02	450	230	595x1195x60	4.8	80	2.50/3.50

Reference	Power [W]	Voltage [V]	Dimensions [mm]	Weight [kg]	Surface T° [°C]	Mini/Max Mounting Height [m]
CASS850580-01	300	230	595x595x60	2.4	100	2.50/5.00
CASS850580-02	600	230	595x1195x60	4.8	100	2.50/5.00

IP20 - WING CASSETTES

Reference	Power [W]	Voltage [V]	Dimensions [mm]	Weight [kg]	Surface T° [°C]	Mini/Max Mounting Height [m]
CASSWING450-01	450	230	595x1200x40	2.5	70	2.50/5.00
CASSWING600-01	600	230	595x1200x40	2.5	70	2.50/5.00

IP55 PROTECTION FACTOR - ALL INSTALLATIONS

Reference	Power [W]	Voltage [V]	Dimensions [mm]	Weight [kg]	Surface T° [°C]	Mini/Max Mounting Height [m]
CASS850580-51	300	230	595x595x60	2.4	90	2.50/6.00
CASS850580-52	600	230	595x1195x60	4.8	90	2.50/6.00

Reference	Power [W]	Voltage [V]	Dimensions [mm]	Weight [kg]	Surface T° [°C]	Mini/Max Mounting Height [m]
CASS1100585-51	400	230	595x595x30	4	100	2.50/6.00
CASS1100585-52	750	230	595x1195x30	8	100	2.50/6.00
CASS1100585-53	1100	230	595x1800x30	14	100	2.50/6.00
CASS1100510-52	1100	230	1050x1050x30	12	100	2.50/6.00
CASS1100490-52	1200	230	1000x1200x30	13	100	2.50/6.00

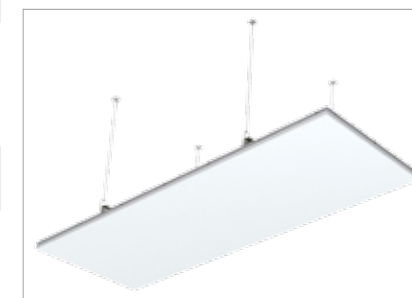
IP55 PROTECTION FACTOR - ALL INSTALLATIONS - ANY COLOURS TO SPECIAL ORDER

Reference	Power [W]	Voltage [V]	Dimensions [mm]	Weight [kg]	Surface T° [°C]	Mini/Max Mounting Height [m]
CASC1100585-51	400	230	595x595x30	4	100	2.50/6.00
CASC1100585-52	750	230	595x1195x30	8	100	2.50/6.00
CASC1100585-53	1100	230	595x1800x30	14	100	2.50/6.00
CASC1100510-52	1100	230	1050x1050x30	12	100	2.50/6.00
CASC1100490-52	1200	230	1000x1200x30	13	100	2.50/6.00

ANTARES RANGE

RADIANT CASSETTE TO SUSPEND OR MOUNT IN THE CEILING

(P 36-37)



TANAMI RANGE

KIT FOR LAMINATED FLOOR FOR RESIDENTIAL OR COMMERCIAL BUILDINGS (PREFABRICATED HEATING MODULE, PRE-INSULATED FOR INSTALLATION. PLUG AND PLAY)

(P 40-41)



WIDTH 540mm - 135W/m²

Reference	Description	Power [W]	Width [mm]	Length [mm]
MODS135600-02	Module TANAMI 135W/m ² -88W-230V-540x1170x12mm	88	540	1170

WIDTH 540mm - NEUTRAL

Reference	Description	Power [W]	Width [mm]	Length [mm]
MODS000000-02	Module TANAMI Neutral - 540x1170x12mm	0	540	1170

ACCESSORIES QUICK CONNECTION LINE

Reference	Description	Dimensions Total Length [m]	Distance spacing [mm]	Cable length to first socket [m]
DE04008-01	Quick floor connection line - 8 connections	7.80	540	4
DE04010-01	Quick floor connection line - 10 connections	8.90	540	4
DE04012-01	Quick floor connection line - 12 connections	9.94	540	4

THERMOSTATS

Reference	Description
THER007	Wire pilot (to be used with a central clock)
THER008	Flush mounting, digital, programmable thermostat
THEF012	Programmable thermostat, radio frequency with receiver
THEF012R	Receiver only for THEF012
THEP001	Floor sensor

KITS

Reference	Description	Packaging	Power [W]	[mm]	Packaging Size [mm]	[mm]	Weight [kg]
RPKS0776-01	Kit TANAMI 8 m ²	1xA	776	1220	660	200	12,5
RPKS1164-01	Kit TANAMI 12 m ²	1xB	1164	1220	660	260	18,0
RPKSN003-01	KIT TANAMI 6 neutral modules	1xC	0	1220	660	260	10

Box A :

Composition KIT RPKS0776 (8m² Covering) :
 8 Modules MODS135600-02
 5 Modules MODS000000-02
 1 Thermostat THER008
 1 Floor sensor THEP001
 1 Quick Connexion Line DE00008-01

Box B :

Composition KIT RPKS1164 (12m² Covering) :
 12 Modules MODS135600-02
 7 Modules MODS000000-02
 1 Thermostat THER008
 1 Floor sensor THEP001
 1 Quick Connexion Line DE00012-01

Box C :

Composition KIT RPKSN003 (3.8m² Covering) :
 6 Modules MODS000000-02

WIDTH 500mm - 80W/m²

Reference	Description	Power [W]	Width [mm]	Length [mm]
FPRE080500-03	Heating Film Roll ACCONA 80W/m ² - 96W-230V-500x2400 - Class II	96	500	2400
FPRE080500-04	Heating Film Roll ACCONA 80W/m ² - 128W-230V-500x3200 - Class II	128	500	3200
FPRE080500-05	Heating Film Roll ACCONA 80W/m ² - 160W-230V-500x4000 - Class II	160	500	4000
FPRE080500-06	Heating Film Roll ACCONA 80W/m ² - 192W-230V-500x4800 - Class II	192	500	4800
FPRE080500-07	Heating Film Roll ACCONA 80W/m ² - 224W-230V-500x5600 - Class II	224	500	5600

WIDTH 500mm - 150W/m²

Reference	Description	Power [W]	Width [mm]	Length [mm]
FPRE150500-04	Heating Film Roll ACCONA 150W/m ² - 180W-230V-500x2400 - Class II	180	500	2400
FPRE150500-05	Heating Film Roll ACCONA 150W/m ² - 225W-230V-500x3000 - Class II	225	500	3000
FPRE150500-06	Heating Film Roll ACCONA 150W/m ² - 270W-230V-500x3600 - Class II	270	500	3600
FPRE150500-07	Heating Film Roll ACCONA 150W/m ² - 315W-230V-500x4200 - Class II	315	500	4200
FPRE150500-08	Heating Film Roll ACCONA 150W/m ² - 360W-230V-500x4800 - Class II	360	500	4800
FPRE150500-09	Heating Film Roll ACCONA 150W/m ² - 405W-230V-500x5400 - Class II	405	500	5400

WIDTH 540mm - 135W/m²

Reference	Description	Power [W]	Width [mm]	Length [mm]
FPRE135540-01	Heating Film Roll ACCONA 135W/m ² - 44W-230V-540x585 - Class II	44	540	585
FPRE135540-02	Heating Film Roll ACCONA 135W/m ² - 88W-230V-540x1170 - Class II	88	540	1170
FPRE135540-03	Heating Film Roll ACCONA 135W/m ² - 132W-230V-540x1755 - Class II	132	540	1755
FPRE135540-04	Heating Film Roll ACCONA 135W/m ² - 176W-264V-540x2340 - Class II	176	540	2340
FPRE135540-05	Heating Film Roll ACCONA 135W/m ² - 220W-230V-540x2925 - Class II	220	540	2925
FPRE135540-06	Heating Film Roll ACCONA 135W/m ² - 264W-230V-540x3510 - Class II	264	540	3510
FPRE135540-07	Heating Film Roll ACCONA 135W/m ² - 308W-230V-540x4095 - Class II	308	540	4095
FPRE135540-08	Heating Film Roll ACCONA 135W/m ² - 352W-230V-540x4680 - Class II	352	540	4680
FPRE135540-09	Heating Film Roll ACCONA 135W/m ² - 396W-230V-540x5265 - Class II	396	540	5265

WIDTH 540mm - 175W/m²

Reference	Description	Power [W]	Width [mm]	Length [mm]
FPRE175540-02	Heating Film Roll ACCONA 175W/m ² - 108W-230V-540x1170 - Class II	216	540	1170
FPRE175540-03	Heating Film Roll ACCONA 175W/m ² - 162W-230V-540x1755 - Class II	216	540	1755
FPRE175540-04	Heating Film Roll ACCONA 175W/m ² - 216W-230V-540x2340 - Class II	216	540	2340
FPRE175540-05	Heating Film Roll ACCONA 175W/m ² - 270W-230V-540x2925 - Class II	270	540	2925
FPRE175540-06	Heating Film Roll ACCONA 175W/m ² - 324W-230V-540x3510 - Class II	324	540	3510
FPRE175540-07	Heating Film Roll ACCONA 175W/m ² - 378W-230V-540x4095 - Class II	378	540	4095
FPRE175540-08	Heating Film Roll ACCONA 175W/m ² - 432W-230V-540x4680 - Class II	432	540	4680
FPRE175540-09	Heating Film Roll ACCONA 175W/m ² - 486W-230V-540x5265 - Class II	486	540	5265

ACCONA RANGE

FILM IN ROLL
FOR LAMINATE FLOORING,
PVC FLOOR, RESIDENTIAL
OR COMMERCIAL
BUILDINGS.

HEATING FILM TO PLACE
OVER A STANDARD
POLYETHYLENE FOAM
UNDERLAY (NOT INCLUDED).
DRY INSTALLATION
WITHOUT GLUE OR TOOLS.

(P 42-43)



ACCONA RANGE

(P 42-43)

ACCESSORIES THERMOSTATS & SENSORS

Reference	Description
THER007	Pilot wire (to be used with a central clock)
THER008	Flush mounting, digital, programmable thermostat
THEF012	Programmable thermostat, radio frequency with receiver
THEF012R	Receiver only for THEF012
THEP001	Floor sensor Class II, 3m for thermostat

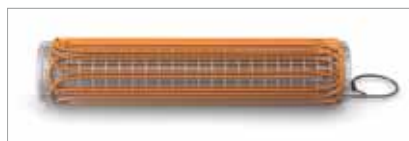
HOGGAR RANGE

HEATING CABLE FOR
INSTALLATION UNDER TILES
(VERY THIN CABLE WITH
PRESET SPACING
FOR EASY INSTALLATION)

(P 44-45)

ILO MILLIMETRIC MATS

Reference	Description	Length of cable [m]	Power [W]	Dimensions Length [m]	Mats Width [m]	Length cold leads [m]
HCUT115502-01	Heating cable Millimetric HOGGAR 120W	15.5	120	2.0	0.5	4
HCUT115503-01	Heating cable Millimetric HOGGAR 180W	29	180	3.0	0.5	4
HCUT115504-01	Heating cable Millimetric HOGGAR 240W	34	240	4.0	0.5	4
HCUT115506-01	Heating cable Millimetric HOGGAR 360W	52	360	6.0	0.5	4
HCUT115508-01	Heating cable Millimetric HOGGAR 480W	66	480	8.0	0.5	4
HCUT115510-01	Heating cable Millimetric HOGGAR 600W	88	600	10.0	0.5	4
HCUT115512-01	Heating cable Millimetric HOGGAR 720W	100	720	12.0	0.5	4
HCUT115514-01	Heating cable Millimetric HOGGAR 840W	110	840	14.0	0.5	4
HCUT115516-01	Heating cable Millimetric HOGGAR 960W	134	960	16.0	0.5	4
HCUT115520-01	Heating cable Millimetric HOGGAR 1200W	170	1200	20.0	0.5	4
HCUT115524-01	Heating cable Millimetric HOGGAR 1440W	212	1440	24.0	0.5	4
HCUT115525-01	Heating cable Millimetric HOGGAR 1500W	214	1500	25.0	0.5	4
HCUT115528-01	Heating cable Millimetric HOGGAR 1680W	248	1680	28.0	0.5	4
HCUT115530-01	Heating cable Millimetric HOGGAR 1800W	252	1800	30.0	0.5	4



ACCESSORIES THERMOSTATS & SENSORS

Reference	Description
THER007	Pilot wire (to be used with a central clock)
THER008	Flush mounting, digital, programmable thermostat
THEF012	Programmable thermostat, radio frequency with receiver
THEF012R	Receiver only for THEF012
THEP001	Floor sensor Class II, 3m for thermostat



SECTIONS

Reference	Description	Length of cable [m]	Power [W]	Hooks Quantity	Length cold leads [m]
HCBC121001-01	Heating cable Section TENERE 150W	9	150	30	2.5
HCBC121002-01	Heating cable Section TENERE 230W	13.5	230	30	2.5
HCBC121003-01	Heating cable Section TENERE 300W	18	300	30	2.5
HCBC121004-01	Heating cable Section TENERE 400W	23	400	45	2.5
HCBC121005-01	Heating cable Section TENERE 500W	27.70	500	60	2.5
HCBC121006-01	Heating cable Section TENERE 600W	33.50	600	75	2.5
HCBC121007-01	Heating cable Section TENERE 700W	39	700	90	2.5
HCBC121008-01	Heating cable Section TENERE 850W	50	850	105	2.5
HCBC121010-01	Heating cable Section TENERE 1000W	56	1000	120	2.5
HCBC121011-01	Heating cable Section TENERE 1150W	65	1150	135	2.5
HCBC121013-01	Heating cable Section TENERE 1300W	73	1300	150	2.5
HCBC121015-01	Heating cable Section TENERE 1500W	86	1500	180	2.5
HCBC121017-01	Heating cable Section TENERE 1700W	98	1700	195	2.5
HCBC121019-01	Heating cable Section TENERE 1900W	109	1900	225	2.5
HCBC121021-01	Heating cable Section TENERE 2100W	120	2100	255	2.5
HCBC121023-01	Heating cable Section TENERE 2300W	133	2300	290	2.5
HCBC121026-01	Heating cable Section TENERE 2600W	152	2600	315	2.5

ELASTIC MATS

Reference	Description	Length of cable [m]	Power [W]	Dimensions Length [m]	Mats Width [m]	Hooks Quantity	Length cold leads [m]
HCBE127001-01	Heating cable Elastic Mat TENERE 150W/230V - 0.5x2.2m	9	150	2.2	0.5	30	2.5
HCBE127002-01	Heating cable Elastic Mat TENERE 230W/230V - 0.5x3.5m	13.5	230	3.5	0.5	30	2.5
HCBE127003-01	Heating cable Elastic Mat TENERE 300W/230V - 0.5x4.6m	18	300	4.6	0.5	30	2.5
HCBE127004-01	Heating cable Elastic Mat TENERE 400W/230V - 0.5x6.2m	23	400	6.2	0.5	30	2.5
HCBE127005-01	Heating cable Elastic Mat TENERE 500W/230V - 0.5x7.8m	27.70	500	7.8	0.5	45	2.5
HCBE127006-01	Heating cable Elastic Mat TENERE 600W/230V - 0.5x9.4m	33.50	600	9.4	0.5	45	2.5
HCBE127007-01	Heating cable Elastic Mat TENERE 700W/230V - 0.85x6.9m	39	700	6.9	0.85	45	2.5
HCBE127008-01	Heating cable Elastic Mat TENERE 850W/230V - 0.85x8.3m	50	850	8.3	0.85	60	2.5
HCBE127010-01	Heating cable Elastic Mat TENERE 1000W/230V - 0.85x9.9m	56	1000	9.9	0.85	75	2.5
HCBE127011-01	Heating cable Elastic Mat TENERE 1150W/230V - 0.85x11.4m	65	1150	11.4	0.85	75	2.5
HCBE127013-01	Heating cable Elastic Mat TENERE 1300W/230V - 0.85x12.8m	73	1300	12.8	0.85	90	2.5
HCBE127015-01	Heating cable Elastic Mat TENERE 1500W/230V - 0.85x14.9m	86	1500	14.9	0.85	105	2.5
HCBE127017-01	Heating cable Elastic Mat TENERE 1700W/230V - 0.85x16.8m	98	1700	16.8	0.85	105	2.5
HCBE127019-01	Heating cable Elastic Mat TENERE 1900W/230V - 0.85x18.9m	109	1900	18.9	0.85	120	2.5
HCBE127021-01	Heating cable Elastic Mat TENERE 2100W/230V - 0.85x20.8m	120	2100	20.8	0.85	135	2.5
HCBE127023-01	Heating cable Elastic Mat TENERE 2300W/230V - 0.85x22.72m	133	2300	22.72	0.85	165	2.5
HCBE127026-01	Heating cable Elastic Mat TENERE 2600W/230V - 0.85x25.9m	152	2600	25.9	0.85	165	2.5

TENERE RANGE

UNDER FLOOR HEATING CABLE FOR RESIDENTIAL OR COMMERCIAL BUILDINGS (SPECIAL CABLE TO BE INSTALLED IN CONCRETE)

(P 46-47)



TENERE RANGE

HEATING CABLE FOR INSTALLATION IN FLOATING SCREED

(P 46-47)



MATS

Reference	Description	Length of cable [m]	Power [W]	Dimensions Length [m]	Mats Width [m]	Hooks Quantity	Length cold leads [m]
HCBT126001-01	Heating cable Mat TENERE 150W/230V - 0.5x2.2m	9	150	2.6	0.5	30	2.5
HCBT126002-01	Heating cable Mat TENERE 230W/230V - 0.5x3.5m	13.5	230	3.9	0.5	30	2.5
HCBT126003-01	Heating cable Mat TENERE 300W/230V - 0.5x4.6m	18	300	4.8	0.5	30	2.5
HCBT126004-01	Heating cable Mat TENERE 400W/230V - 0.5x6.2m	23	400	6.5	0.5	30	2.5
HCBT126005-01	Heating cable Mat TENERE 500W/230V - 0.5x7.8m	27.70	500	8.1	0.5	45	2.5
HCBT126006-01	Heating cable Mat TENERE 600W/230V - 0.5x9.4m	33.50	600	9.9	0.5	45	2.5
HCBT126007-01	Heating cable Mat TENERE 700W/230V-0.85x6.9m	39	700	7.2	0.85	45	2.5
HCBT126008-01	Heating cable Mat TENERE 850W/230V - 0.85x8.3m	50	850	8.6	0.85	60	2.5
HCBT126010-01	Heating cable Mat TENERE 1000W/230V - 0.85x9.9m	56	1000	10.5	0.85	75	2.5
HCBT126011-01	Heating cable Mat TENERE 1150W/230V - 0.85x11.4m	65	1150	11.6	0.85	75	2.5
HCBT126013-01	Heating cable Mat TENERE 1300W/230V - 0.85x12.8m	73	1300	13.3	0.85	90	2.5
HCBT126015-01	Heating cable Mat TENERE 1500W/230V - 0.85x14.9m	86	1500	15.3	0.85	105	2.5
HCBT126017-01	Heating cable Mat TENERE 1700W/230V - 0.85x16.8m	98	1700	17.4	0.85	105	2.5
HCBT126019-01	Heating cable Mat TENERE 1900W/230V - 0.85x18.9m	109	1900	19.4	0.85	120	2.5
HCBT126021-01	Heating cable Mat TENERE 2100W/230V - 0.85x20.8m	120	2100	21.4	0.85	135	2.5
HCBT126023-01	Heating cable Mat TENERE 2300W/230V - 0.85x21.30m	133	2300	21.30	0.85	165	2.5
HCBT126026-01	Heating cable Mat TENERE 2600W/230V - 0.85x25.9m	152	2600	26.9	0.85	165	2.5

ACCESSORIES THERMOSTATS & SENSORS

Reference	Description
THER007	Wire pilot (to be used with a central clock)
THER008	Flush Mounting, Digital, Programmable Thermostat
THEF012	Programmable Thermostat, Radio Frequency with receiver
THEF012R	Receiver only for THEF012
THEP001	Floor Sensor

Comfort is Art

Forget what you think about heating!

Just discover the real comfort of
ILO RADIANT HEATING SYSTEMS

ILO TECHNOLOGY are the Specialists in Infra Red radiant heating.

ILO products are supported by the guarantee and responsibility of a leading French manufacturer. We specialise in the manufacture of radiant heating systems based around our high quality tried and trusted flexible films.

You will benefit from our expertise in diverse areas such as commerce, residential, railways, maritime, electric cars, aerospace, medical and manufacturing processes. For over 20 years, our products have been installed throughout the world, from Europe and Canada to New Zealand, wherever heating is required.

ILO TECHNOLOGY products have all the certifications necessary and possible, depending on the respective application.

ILO TECHNOLOGY is of course also certified ISO 9001.

So you may be confident in purchasing products which not only meet your desire for design, comfort and economy, but also result from expertise and advanced research in other fields.

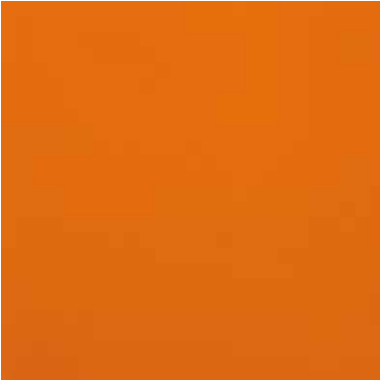
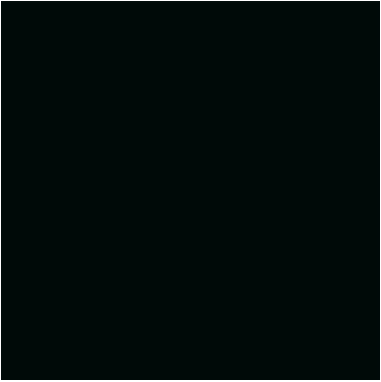
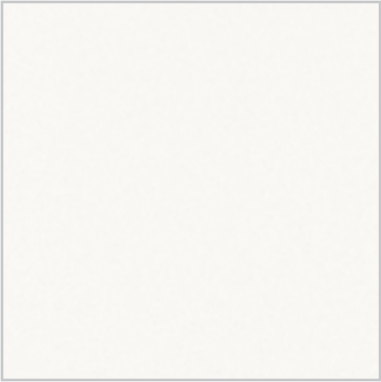
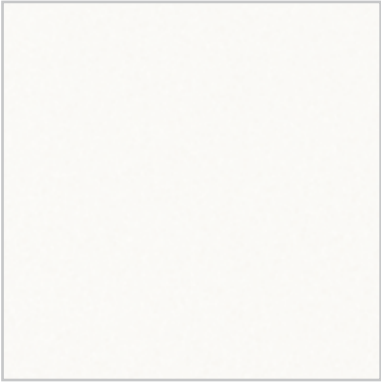
We wish you the most comfortable life with our products.



DIAMANT

COLOURS RANGE

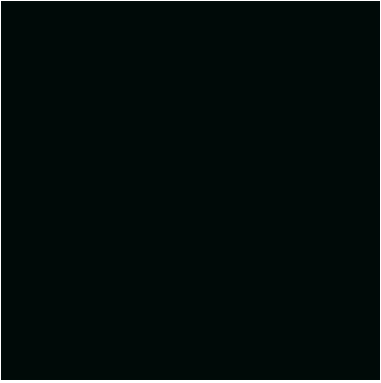
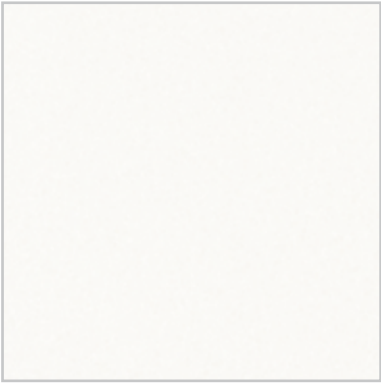
(P 8 - 11)

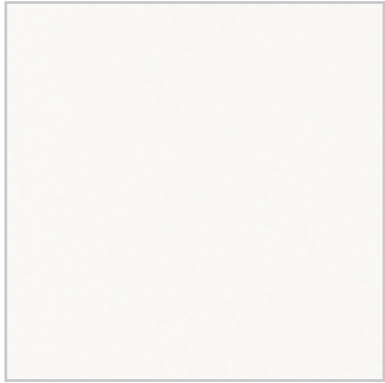
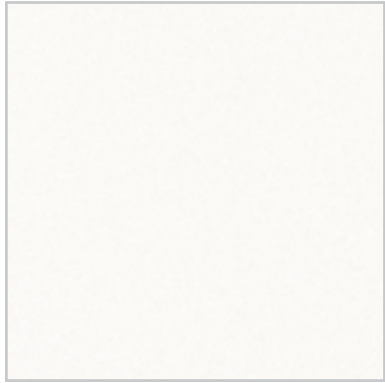


CERAMIC

COLOURS RANGE

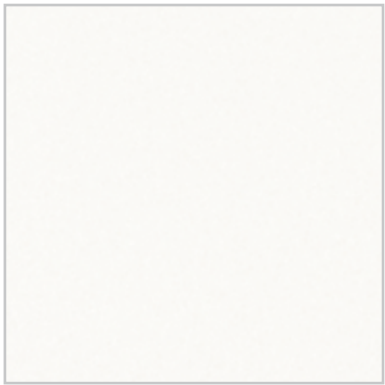
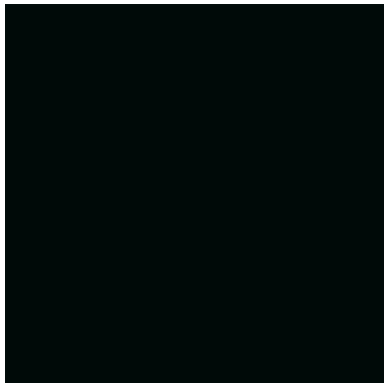
(P 14 - 15)





CRYSTAL
COLOURS RANGE

(P 12 - 13)



GRANIT
COLOURS RANGE

(P16 - 17)

Factory: **ILO Technology**

Address : ZI Les Triboulières, N°21
38460 CREMIEU
FRANCE

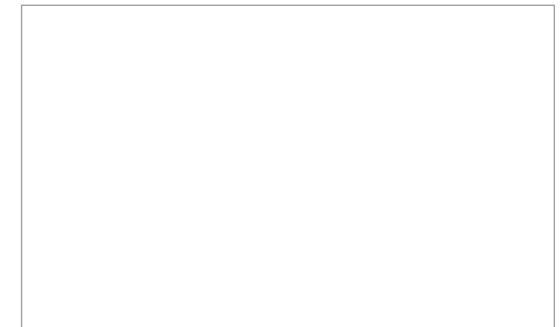
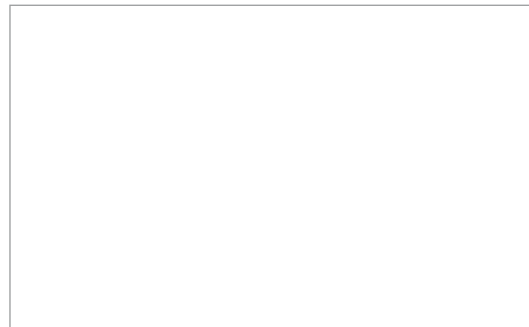
Phone: + 33 (0)4 74 90 55 11

Fax: + 33 (0)4 74 90 55 02



www.ilo-international.com

* contact our distributors in other countries,
directly on our website



Your Distributor